



PROUDLY  
CANADIAN

# 2014

IN-STOCK  
& CUSTOM  
CATALOGUE

**K**  **BE**  
[KOBESPORTSWEAR.COM](http://KOBESPORTSWEAR.COM)

**K3G**



# WELCOME TO THE TEAM

FOR OVER 20 YEARS, KOBE SPORTSWEAR HAS BEEN AN INDUSTRY LEADER IN TEAM UNIFORMS AND IMPRINTABLE ATHLETIC APPAREL, INTRODUCING INNOVATIVE PRODUCTS TO GENERATIONS OF ATHLETES.



KOBE Athletes | JUSTIN PHILLIPS, BRETT TWIZELL (on the cover), ADRIAN VASCONCELOS, Toronto Attack



## OUR CORPORATE AND TEAM PARTNERS

	PROUD SPONSOR OF ONTARIO MINOR HOCKEY ASSOCIATION		PROUD SPONSOR OF TEAM ONTARIO DEAF HOCKEY		OFFICIAL PARTNER OF TSN RADIO 1058		OFFICIAL SPONSOR OF MOUNTBRES JE A LACROSSE
	OFFICIAL SPONSOR OF TORONTO ATTACK U18 HOCKEY		PROUD SPONSOR OF PENALTY FREE SWEEPSTAKES AND UNDER 17 PERFORMANCE CAMP		PROUD SPONSOR OF TORONTO KIWARS BOYS & GIRLS CLUB		OFFICIAL PARTNER OF SPORTSNET 590
	PROUD SPONSOR OF TEAM ONTARIO IN THE 2013 CANADA GAMES		PROUD SPONSOR OF CANADIAN HOCKEY ENTERPRISES HOCKEY CAMPS		PROUD SPONSOR OF HOCKEY HALL OF FAME 2012 LEGENDS CLASSIC		OFFICIAL SPONSOR OF CANADIAN MEN'S BLUE HOCKEY TEAM
	PROUD SPONSOR OF CARLAN RAC		PROUD PARTNER OF KARATE ONTARIO		OFFICIAL PARTNER OF RONALD MCDONALD HOUSE SOUTHERN ALBERTA		PROUD SPONSOR OF I AM GAME
	OFFICIAL PARTNER OF HOCKEY HELPS THE HOMELESS		PROUD SPONSOR OF PETERBOROUGH LAKERS IHL TEAM		OFFICIAL SPONSOR OF TORONTO PREDATORS JE A HOCKEY		



# POWERING ATHLETES WORLDWIDE



**CANADIAN TIRE  
HOME + AUTO SHOW**

**TORONTO KIWANIS  
BOYS & GIRLS CLUB  
BASKETBALL TEAM**

**TEAM ONTARIO  
DEAF HOCKEY**

**PETERBOROUGH  
LAKERS MSL TEAM**

**ROBERT YOUNG JR.  
OMHA CHAMPIONS**

**HOCKEY  
INTERNATIONAL**

**CANADIAN HOCKEY  
ENTERPRISES  
2012 CAMP**

**CANADIAN MENS  
INLINE HOCKEY TEAM**

**SILVERBACK  
GORILLA**

**TEAM ISRAEL  
BALL HOCKEY**

**ENNISMORE EAGLES  
OMHA CHAMPIONS**

**CALEDON HAWKS  
OMHA CHAMPIONS**

**HOCKEY HALL  
OF FAME 2012  
LEGENDS CLASSIC**

**EQUIPE ROUSSEAU  
PRO HOCKEY LIFE**

**TEAM ONTARIO  
KARATE**

**TDESSA CITY CHAMPS  
DON MILLS  
MIDDLE SCHOOL**

## KOBE SPORTSWEAR IN ACTION

CALLING ALL KOBE FANS! SEND US PHOTOS OF YOU OR YOUR TEAM SUITED UP IN KOBE GEAR AND WE'LL PUT THE BEST ONES ONLINE AND MAYBE EVEN IN OUR NEXT CATALOGUE! SUBMIT VIA OUR FACEBOOK PAGE AT [FACEBOOK.COM/KOBESPORTSWEAR](https://www.facebook.com/kobesportswear) OR EMAIL [CONTEST@KOBESPORTSWEAR.COM](mailto:CONTEST@KOBESPORTSWEAR.COM)



# CATEGORY INDEX

2014 IN-STOCK & CUSTOM CATALOGUE





**ALL  
NEW  
STYLES**

**KOBE SUB360  
p6 PROGRAM**

*Hockey  
Baseball  
Basketball  
Lacrosse  
Rugby  
Soccer  
Scarves & Toques*

**p28 K3G PRO  
HOCKEY JERSEYS**

*K3G Los Angeles  
K3G Nashville  
K3G New Jersey  
K3G New York  
K3G Ottawa*

**FIELD LACROSSE  
p56 JERSEY**

**p72 VELOCITY  
WARM-UP SUIT**

**KOBE**

**KOBESPORTSWEAR.COM**



# KOBE SUB360

Revolutionize the way you decorate and communicate your brand experience

## The KOBE SUB360 Advantage

A package of premium stock designs are now available for you to offer as part of your decoration services. This takes the guesswork out of sublimation, reducing decision time and maximizing your bottom line. *No setup charges, no hidden fees.*

Predefined decoration zones help easily identify additional locations where graphics/logos of your choice can be added, for *a completely custom experience.*

A streamlined approval and production process allows you to have a worry free experience. An industry leading 15 day (360 hour) production time *ensures even your tightest deadlines are met*, no matter how big the job.!

## The KOBE SUB360 Timeline

1

### Make The Call

Contact our dedicated custom department with your idea and custom template selection.



2

### Conceptualize Your Idea

Our team of sublimation artists will rapidly conceptualize your ideas into production ready files.

3-4 Days





fast & easy

no hidden fees

amazing prices

premium design & quality

HOBBIES  
SUB  
\$30

Hockey p8   Lacrosse p14   Scarves & Toques p20  
Baseball p10   Rugby p16  
Basketball p12   Soccer p18

3

**Production Begins**

Construction of your sublimated apparel will only take 15 business days after receipt of your deposit.<sup>1</sup>

15 days



4

**Receive Your Order**

Get your products by choosing one of the many available shipping options. If you are in the area, save time and money with our pick-up option.





# SUB<sup>360</sup>

## 1.0 HOCKEY PROGRAM



### SUBLIMATED HOCKEY JERSEY

FABRIC: 61 Fabric

- 5 Panel Jersey
- Straight Bottom
- One Colour, Self-Fabric V-Neck Collar
- Double Shoulders/Elbows

SIZES: Adult S-2XL / Youth M-XL / 3XL, Goalle

MSRP: **CAD** \$78.00 / \$77.00 / \$83.00

**USD** \$78.00 / \$77.00 / \$83.00



**DESIGN**  
1.10



1.11



1.12



1.13



1.14



1.15



**DESIGN**  
1.20



1.21



1.22



1.23



1.24



1.25



**DESIGN**  
1.30



1.31



1.32



1.33



1.34

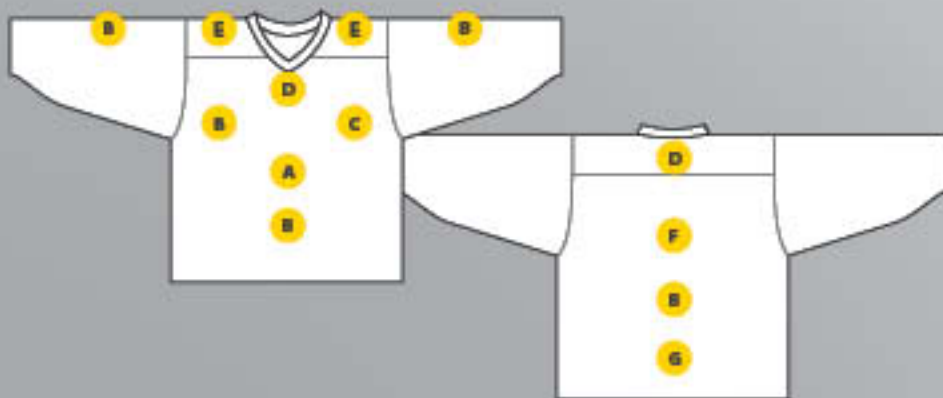


1.35



## DECORATION OPTIONS

- A TEAM LOGO/NAME
- B NUMBER
- C CAPTAINCY
- D LEAGUE CREST
- E SPONSOR LOGO
- F PLAYER/SPONSOR NAME
- G SPONSOR NAME



**DESIGN**  
**1.40**



**DESIGN**  
**1.50**



**DESIGN**  
**1.60**



\*Graphics shown are for preview purposes only. Actual product may vary.



# SUB'360

## 2.0 BASEBALL PROGRAM



SUBLIMATED BASEBALL JERSEY

FABRIC: 61 Fabric

- BBI Pattern

SIZES: Adult S-2XL / Youth S-XL / 3XL

MSRP CAD \$78.00 / \$77.00 / \$83.00

USD \$78.00 / \$77.00 / \$83.00



DESIGN  
2.10



DESIGN  
2.20



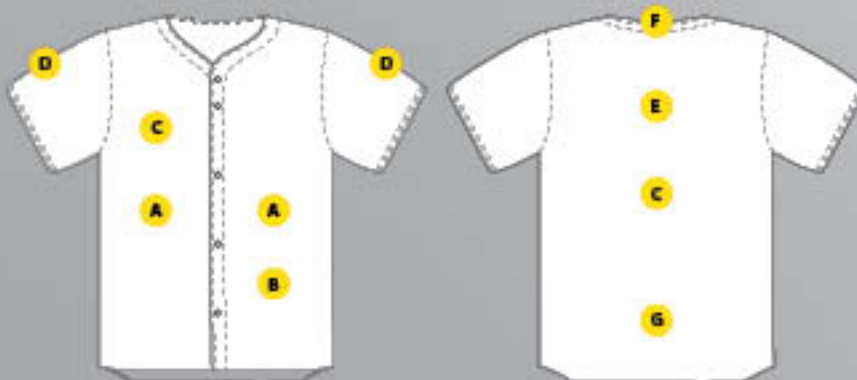
DESIGN  
2.30





# DECORATION OPTIONS

- A TEAM LOGO/NAME
- B TEAM LOGO/NUMBER
- C NUMBER
- D TEAM LOGO
- E PLAYER/SPONSOR NAME
- F LEAGUE/TEAM LOGO
- G SPONSOR NAME



**DESIGN**  
2.40



**DESIGN**  
2.50



**DESIGN**  
2.60



\*Graphics shown are for preview purposes only. Actual product may vary.



# SUB<sup>360</sup>

## 3.0 BASKETBALL PROGRAM



### SUBLIMATED BASKETBALL JERSEY

FABRIC: 61 Fabric

- Regular Cut Pattern
- One Colour, Self-Fabric V-Neck Collar

SIZES: Adult S-2XL / Youth S-XL / 3XL

MSRP: CAD \$70.00 / \$69.00 / \$75.00

USD \$70.00 / \$69.00 / \$75.00

### SUBLIMATED BASKETBALL SHORTS

FABRIC: 61 Fabric

- Standard Shorts

SIZES: Adult S-2XL / Youth S-XL / 3XL

MSRP: CAD \$60.00 / \$59.00 / \$65.00

USD \$60.00 / \$59.00 / \$65.00



DESIGN  
3.10



DESIGN  
3.20



DESIGN  
3.30





# DECORATION OPTIONS

- A NUMBER
- B TEAM NAME
- C TEAM LOGO
- D PLAYER/SPONSOR NAME
- E LEAGUE LOGO/SPONSOR LOGO
- F NUMBER/SPONSOR LOGO
- G CAPTAINCY



**DESIGN 3.40**



**DESIGN 3.50**



**DESIGN 3.60**



\*Graphics shown are for preview purposes only. Actual product may vary.



# SUB360

## 4.0 LACROSSE PROGRAM



### SUBLIMATED LACROSSE JERSEY

FABRIC: 61 Fabric

- Mesh Gussets
- Straight Bottom
- One Colour, Self-Fabric V-Neck Collar
- Single Shoulders/Elbows

SIZES: Adult S-2XL / Youth S-XL / 3XL, Goalle

MSRP: CAD \$78.00 / \$77.00 / \$83.00

USD \$78.00 / \$77.00 / \$83.00

### SUBLIMATED LACROSSE SHORTS

FABRIC: 61 Fabric

- Standard Shorts

SIZES: Adult S-2XL / Youth S-XL / 3XL, Goalle

MSRP: CAD \$60.00 / \$59.00 / \$65.00

USD \$60.00 / \$59.00 / \$65.00



DESIGN  
4.10



DESIGN  
4.20



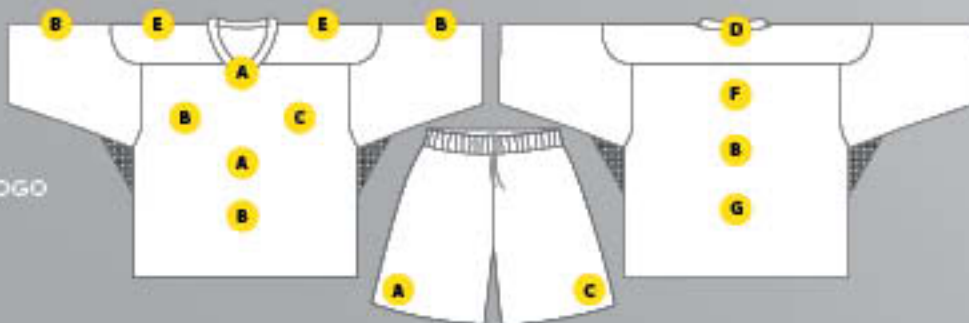
DESIGN  
4.30





## DECORATION OPTIONS

- A NUMBER
- B TEAM NAME
- C TEAM LOGO
- D PLAYER/SPONSOR NAME
- E LEAGUE LOGO/SPONSOR LOGO
- F NUMBER/SPONSOR LOGO
- G CAPTAINCY



**DESIGN**  
4.40



**DESIGN**  
4.50



**DESIGN**  
4.60



\* Graphics shown are for preview purposes only. Actual product may vary.

# SUB360

## 5.0 RUGBY PROGRAM



SUBLIMATED RUGBY JERSEY

FABRIC: Whistler Knit

- Standard Rugby pattern

SIZES: Adult S-2XL / Youth S-XL / 3XL

MSRP: **CAD** \$66.00 / \$65.00 / \$71.00

**USD** \$66.00 / \$65.00 / \$71.00



DESIGN  
5.10



5.11



5.12



5.13



5.14



5.15



DESIGN  
5.20



5.21



5.22



5.23



5.24



5.25



DESIGN  
5.30



5.31



5.32



5.33



5.34

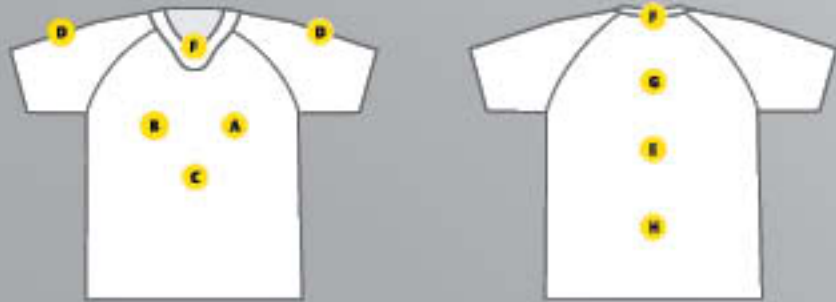


5.35



## DECORATION OPTIONS

- A CLUB CREST
- B SPONSOR LOGO
- C SPONSOR/TEAM LOGO
- D SPONSOR LOGO
- E NUMBER
- F TEAM/LEAGUE LOGO
- G PLAYER/SPONSOR NAME
- H SPONSOR NAME



**DESIGN**  
5.40



**DESIGN**  
5.50



**DESIGN**  
5.60



\* Graphics shown are for preview purposes only. Actual product may vary.

# SUB360 6.0 SOCCER PROGRAM



SUBLIMATED SOCCER JERSEY

FABRIC: Quick Dry Mesh

- Crew Neck T-shirt

SIZES: Adult S-2XL / Youth S-XL / 3XL

MSRP: CAD \$66.00 / \$65.00 / \$71.00

USD \$66.00 / \$65.00 / \$71.00



DESIGN  
6.10



DESIGN  
6.20



DESIGN  
6.30





# DECORATION OPTIONS

- A CLUB CREST
- B SPONSOR LOGO
- C SPONSOR/TEAM LOGO
- D SPONSOR LOGO
- E NUMBER
- F TEAM/LEAGUE LOGO
- G PLAYER/SPONSOR NAME
- H SPONSOR NAME



**DESIGN**  
6.40



**DESIGN**  
6.50



**DESIGN**  
6.60

\* Graphics shown are for preview purposes only. Actual product may vary.

# SUB<sup>360</sup> 7.0 SCARVES & TOQUES



## SUBLIMATED TOUQUE

FABRIC: 6100 Pro-Knit  
- 16 oz. Fleece Liner

SIZES: One Size  
MSRP: **CAD** \$24.00  
**USD** \$24.00

## SUBLIMATED SCARF

FABRIC: 6100 Pro-Knit  
- 16 oz. Fleece

SIZES: One Size  
MSRP: **CAD** \$24.00  
**USD** \$24.00



DESIGN 7.10

7.11

7.12

7.13

7.14

7.15



DESIGN 7.20

7.21

7.22

7.23

7.24

7.25



DESIGN 7.30

7.31

7.32

7.33

7.34

7.35



DESIGN 7.40

7.41

7.42

7.43

7.44

7.45

\*Graphics shown are for preview purposes only. Actual product may vary.



# KOBE SUB360

## TERMS & CONDITIONS

Kobe SUB360 is a high quality and cost effective sublimation program, designed to minimize production times and meet even the strictest deadlines. If you require a more specialized experience, including product mock-ups and artwork revisions, please view the standard Kobe sublimation programs on the following pages:

Hockey - p.40, Baseball - p.52, Basketball - p.56, Lacrosse - p.60, Apparel - p.104

### Production Time<sup>1</sup>

Standard production time for the SUB360 program is 15 business days (360 hours) from order confirmation sign-off and deposit.

### Printing Minimums

A printing minimum of 6 pieces per template applies. Surcharges will apply if minimums are not met.

### Returns & Cancellations

All produced items cannot be returned. Once the order confirmation is signed off, there can be no cancellations and the order will be invoiced in full.

### Artwork & Design

Trademarked artwork and copyrighted items must be authorized for use prior to ordering.

Client supplied files (logos, text, etc) must be in vector format, with ready to print colours. Raster/Bitmap photo images must be in CMYK with a minimum of 300dpi at actual product size to ensure quality reproduction.

Base template colours (body, accents) are produced utilizing Standard Kobe colours. To serve you better and facilitate efficient service, Kobe Sportswear will not modify or colour match any client supplied artwork or base template colours. Block Athletic font will be used for text and numbers.

## STANDARD KOBE COLOURS



Kobe Sportswear strives to provide the most accurate information at time of print. However, certain terms and conditions may have changed. For complete details and an up to date version, please visit [www.kobesportswear.com/sub360](http://www.kobesportswear.com/sub360).

# HOCKEY

K3GPJ JERSEY p24

p26 Custom K3G33R

p33 98CNH Socks



**350+**  
STYLES  
IN-STOCK

## NEW STYLES

### **K3G PRO HOCKEY JERSEYS**

p26

*K3G Los Angeles*

*K3G Nashville*

*K3G New Jersey*

*K3G New York*

*K3G Ottawa*

IT LEAVE  
IT ALL  
ON THE ICE

HOCKEY



# K3G AMATEUR SERIES MADE IN CANADA

## K3GPJ JERSEY

- Single shoulder and elbow, contrast piping

FABRIC: K3G Fabric, 100% Polyester

SIZES: Adult S-3XL / Goalie / Youth M, XL

MSRP: **CAD \$33.00 / \$38.00 / \$32.00**  
**USD \$35.48 / \$40.86 / \$34.41**

## K3GPS SOCK

- Built-in Velcro tabs, Elastic Cuffs, Ergonomic Fit, Cut & Sew for Durability

FABRIC: K3G Fabric, 100% Polyester

SIZES: Adult S, M, L

MSRP: **CAD \$32.70 / \$34.50 / \$36.30**  
**USD \$35.16 / \$37.10 / \$39.03**



BLACK	BURNT ORANGE	FOREST	GOLD	
<b>K3GPJ BLACK</b> SOCKS K3GPS BLACK	<b>K3GPJ BURNT ORANGE</b> SOCKS K3GPS BURNT ORANGE	<b>K3GPJ FOREST</b> SOCKS K3GPS FOREST	<b>K3GPJ GOLD</b> SOCKS K3GPS GOLD	
GREY	KELLY	MAROON	NAVY	
<b>K3GPJ GREY</b> SOCKS K3GPS GREY	<b>K3GPJ KELLY</b> SOCKS K3GPS KELLY	<b>K3GPJ MAROON</b> SOCKS K3GPS MAROON	<b>K3GPJ NAVY</b> SOCKS K3GPS NAVY	
PURPLE	RED	ROYAL	TEAL	WHITE
<b>K3GPJ PURPLE</b> SOCKS K3GPS PURPLE	<b>K3GPJ RED</b> SOCKS K3GPS RED	<b>K3GPJ ROYAL</b> SOCKS K3GPS ROYAL	<b>K3GPJ TEAL</b> SOCKS K3GPS TEAL	<b>K3GPJ WHITE</b> SOCKS K3GPS WHITE

## 9800 PRACTICE SOCKS

The following 9800 knit practice socks are compatible with K3G Amateur Series jerseys.



WHITE GOLD RED MAROON ROYAL NAVY KELLY FOREST GREY BLACK



**K3G**

## KOBE'S PREMIER PERFORMANCE HOCKEY JERSEYS

K3G TECHNOLOGY  
ENHANCES THE MOBILITY,  
BREATHABILITY AND  
DURABILITY OF THE JERSEY  
ON THE ICE.

**DURABLE****BREATHABLE****MOBILE**



# K3G PRO SERIES



KOBE'S PREMIER PERFORMANCE HOCKEY JERSEYS

## K3G JERSEY



- JERSEY:**
- Authentic Pro Striping and Colours
  - Double Reinforced Shoulders and Elbows
  - Two Needle Cover Stitched Seams

- GOALIE:**
- Single Shoulders
  - Single Sewn Seams
  - Wider & Shorter Sleeves
  - Extra large Armholes and Neck Openings

**FABRIC:** K3G Fabric, 100% Polyester

**SIZES:** Adult S-3XL / Goalie / Youth M, XL

## K3G SOCK

- Built-in Velcro tabs
- Elastic Cuffs
- Ergonomic Fit
- Cut & Sew for Durability
- Authentic Pro Striping and Colours

**FABRIC:** K3G Fabric, 100% Polyester

**SIZES:** Adult S, M, L

BOSTON



**K3G04A**  
PREMIUM

• SOCKS K3GS04A

BOSTON



**K3G04H**  
PREMIUM

• SOCKS K3GS04H

BUFFALO



**K3G02A**  
ULTRA

• SOCKS K3GS02A

BUFFALO



**K3G02H**  
ULTRA

• SOCKS K3GS02H

CHICAGO



**K3G06A**  
EXCEL

• SOCKS K3GS06A

CHICAGO



**K3G06H**  
EXCEL

• SOCKS K3GS06H

COLORADO



**K3G35A**  
PREMIUM

• SOCKS K3GS35A

COLORADO



**K3G35H**  
PREMIUM

• SOCKS K3GS35H

DALLAS



**K3G49H**  
EXCEL

• SOCKS K3GS49H

DETROIT



**K3G00A**  
EXCEL

• SOCKS K3GS00A

DETROIT



**K3G00H**  
EXCEL

• SOCKS K3GS00H

EDMONTON



**K3G11A**  
PREMIUM

• SOCKS K3GS11A



made-to-order  
colours available  
page 109



PRICING: (\$CAD / \$USD)			
PATTERN	ADULT	YOUTH	GOALIE
excel	\$58.20 / \$62.58	\$56.40 / \$60.65	\$67.30 / \$72.37
premium	\$64.70 / \$69.57	\$62.90 / \$67.63	\$72.70 / \$78.17
ultra	\$75.30 / \$80.97	\$73.50 / \$79.03	\$80.40 / \$86.45
PATTERN	S	M	L
K3G sock	\$32.70 / \$35.16	\$34.50 / \$37.10	\$36.30 / \$39.03

**NEW STYLES** This designation indicates a brand new jersey style.

\* K3G PRO socks with this designation indicate available matching 9800 knit sock style. Please refer to 6100 Pro Series section, find the corresponding team, and choose the correctly designated 9800 series sock. \*All other patterns available custom made, call to inquire.

BUFFALO	BUFFALO	CALGARY	CALGARY
<b>K3G02R</b> PREMIUM SOCKS K3GS02R	<b>K3G02W</b> PREMIUM SOCKS K3GS02W	<b>K3G48A</b> PREMIUM SOCKS K3GS48A	<b>K3G48H</b> PREMIUM SOCKS K3GS48H

COLUMBUS	COLUMBUS	COLUMBUS	DALLAS
<b>K3G47A</b> PREMIUM SOCKS K3GS47A	<b>K3G47H</b> PREMIUM * SOCKS K3GS47H	<b>K3G47R</b> PREMIUM SOCKS K3GS47R	<b>K3G49A</b> EXCEL SOCKS K3GS49A

EDMONTON	FLORIDA	FLORIDA	LOS ANGELES
<b>K3G11H</b> PREMIUM * SOCKS K3GS11H	<b>K3G28A</b> PREMIUM SOCKS K3GS28A	<b>K3G28H</b> PREMIUM SOCKS K3GS28H	<b>K3G41A</b> PREMIUM * SOCKS K3GS41A



LOS ANGELES



**K3G41H**  
PREMIUM  
• SOCKS K3GS41H

LOS ANGELES



**K3G41R**  
PREMIUM  
SOCKS K3GS41R

LOS ANGELES



**K3G41W**  
PREMIUM  
SOCKS K3GS41W

MINNESOTA



**K3G56R**  
PREMIUM  
SOCKS K3GS56R

NASHVILLE



**K3G43R**  
PREMIUM  
SOCKS K3GS43R

NASHVILLE



**K3G43W**  
PREMIUM  
SOCKS K3GS43W

NEW JERSEY



**K3G23A**  
PREMIUM  
SOCKS K3GS23A

NEW JERSEY



**K3G23H**  
PREMIUM  
SOCKS K3GS23H

NY ISLANDERS



**K3G50H**  
PREMIUM  
• SOCKS K3GS50H

OTTAWA



**K3G33A**  
PREMIUM  
SOCKS K3GS33A

OTTAWA



**K3G33H**  
PREMIUM  
SOCKS K3GS33H

OTTAWA



**K3G33R**  
PREMIUM  
SOCKS K3GS33R





MONTREAL

MONTREAL

NASHVILLE

NASHVILLE



**K3G08A**  
PREMIUM

• SOCKS K3GS08A



**K3G08H**  
PREMIUM

• SOCKS K3GS08H



**K3G43A**  
PREMIUM

• SOCKS K3GS43A



**K3G43H**  
PREMIUM

• SOCKS K3GS43H

NEW YORK

NEW YORK

NEW YORK

NY ISLANDERS



**K3G18A**  
PREMIUM  
SOCKS K3GS18A



**K3G18H**  
PREMIUM  
• SOCKS K3GS18H



**K3G18R**  
PREMIUM  
• SOCKS K3GS18R



**K3G50A**  
PREMIUM  
SOCKS K3GS50A

OTTAWA

PHILADELPHIA

PHILADELPHIA

PHILADELPHIA



**K3G33W**  
PREMIUM  
SOCKS K3GS33W



**K3G05H**  
EXCEL  
• SOCKS K3GS05H



**K3G05R**  
EXCEL  
• SOCKS K3GS05R



**K3G88A**  
EXCEL  
SOCKS K3GS88A



PHILADELPHIA

PITTSBURGH

PITTSBURGH

SAN JOSE



**K3G88H**  
EXCEL  
SOCKS K3GS88H



**K3G66A**  
PREMIUM  
• SOCKS K3GS66A



**K3G66H**  
PREMIUM  
• SOCKS K3GS66H



**K3G44A**  
PREMIUM  
SOCKS K3GS44A

TORONTO

TORONTO

TORONTO

TORONTO



**K3G24A**  
EXCEL  
• SOCKS K3GS24A



**K3G24H**  
EXCEL  
• SOCKS K3GS24H



**K3G93A**  
PREMIUM  
• SOCKS K3GS24A



**K3G93H**  
PREMIUM  
• SOCKS K3GS24H

WASHINGTON

WASHINGTON

WINNIPEG

WINNIPEG



**K3G31A**  
PREMIUM  
SOCKS K3GS31A



**K3G31H**  
PREMIUM  
SOCKS K3GS31H



**K3G03A**  
PREMIUM  
SOCKS K3GS03A



**K3G03H**  
PREMIUM  
SOCKS K3GS03H





SAN JOSE

ST. LOUIS

ST. LOUIS

TAMPA BAY



**K3G44H**  
PREMIUM  
SOCKS K3GS44H



**K3G42A**  
EXCEL  
SOCKS K3GS42A



**K3G42H**  
EXCEL  
SOCKS K3GS42H



**K3G21R**  
PREMIUM  
SOCKS K3GS21R

TEAM CANADA

TEAM CANADA

VANCOUVER

VANCOUVER



**K3GCDNA**  
EXCEL  
SOCKS K3GSCDNA



**K3GCDNH**  
EXCEL  
SOCKS K3GSCDNH



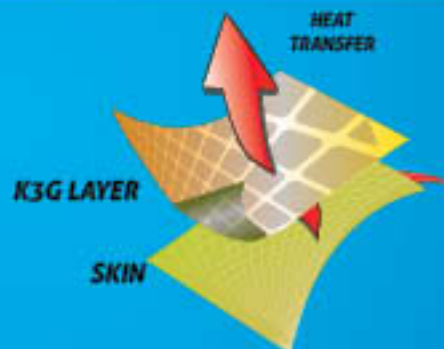
**K3G54A**  
PREMIUM  
• SOCKS K3GS54A



**K3G54H**  
PREMIUM  
SOCKS K3GS54H



K3G TECHNOLOGY ENHANCES THE MOBILITY, VENTILATION AND DURABILITY OF THE JERSEY ON THE ICE. DESIGNED WITH HIGH PERFORMANCE ATHLETES IN MIND, K3G IS PERFECT FOR THOSE WHO DEMAND THE BEST.



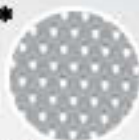


# HOCKEY JERSEY - PRO SERIES



## 9100 PRO SERIES\*

### HEAVYWEIGHT PRO-MESH



- 150 Denier Yarn Construction
- Authentic Pro Striping and Colours
- Double Reinforced Shoulders and Elbows
- Two Needle Cover Stitched Seams
- Large Airholes for Ventilation (9100)
- Small Pinpoint Airholes (6100)
- Custom Made to Order (9100)

## 6100 PRO SERIES

### HEAVYWEIGHT PRO-KNIT



- GOALIE:** - Single Shoulders, Single Sewn Seams  
 - Wider & Shorter Sleeves  
 - Extra large Armholes and Neck Openings

**FABRIC:** 100% Polyester

**SIZES:** Adult S-3XL / Youth M & XL / Goalie  
 (Refer to Size Chart on p. 110)



<p><b>ANAHEIM</b></p> <p>PRO-KNIT 6113A SOCKS 9813A EXCEL</p>	<p><b>ANAHEIM</b></p> <p>PRO-KNIT 6113H SOCKS 9813H EXCEL</p>	<p><b>ANAHEIM</b></p> <p>PRO-MESH 9127A PRO-KNIT 6127A SOCKS 9827A REGULAR</p>	<p><b>ANAHEIM</b></p> <p>PRO-MESH 9127H PRO-KNIT 6127H SOCKS 9827H REGULAR</p>	<p><b>ATLANTA</b></p> <p>PRO-MESH 9146A PRO-KNIT 6146A SOCKS 9846A PREMIUM</p>	<p><b>ATLANTA</b></p> <p>PRO-MESH 9146H PRO-KNIT 6146H SOCKS 9846H PREMIUM</p>
<p><b>BUFFALO</b></p> <p>PRO-KNIT 6102H • SOCKS 9802H ULTRA</p>	<p><b>BUFFALO</b></p> <p>PRO-MESH 9136A PRO-KNIT 6136A SOCKS 9836A PREMIUM</p>	<p><b>BUFFALO</b></p> <p>PRO-MESH 9136H PRO-KNIT 6136H SOCKS 9836H PREMIUM</p>	<p><b>BUFFALO</b></p> <p>PRO-MESH 9136R PRO-KNIT 6136R SOCKS 9836R CUSTOM REGULAR</p>	<p><b>BUFFALO</b></p> <p>PRO-MESH 9112A PRO-KNIT 6112A SOCKS 9812A CUSTOM REGULAR</p>	<p><b>BUFFALO</b></p> <p>PRO-MESH 9112H PRO-KNIT 6112H SOCKS 9812H CUSTOM REGULAR</p>
<p><b>CHICAGO</b></p> <p>PRO-MESH 9106H PRO-KNIT 6106H • SOCKS 9806H REGULAR</p>	<p><b>CHICAGO</b></p> <p>PRO-MESH 9106R PRO-KNIT 6106R SOCKS 9806R REGULAR</p>	<p><b>COLORADO</b></p> <p>PRO-MESH 9135A PRO-KNIT 6135A • SOCKS 9835A PREMIUM</p>	<p><b>COLORADO</b></p> <p>PRO-MESH 9135H PRO-KNIT 6135H • SOCKS 9835H PREMIUM</p>	<p><b>COLORADO</b></p> <p>PRO-MESH 9135R PRO-KNIT 6135R SOCKS 9835R CUSTOM EXCEL</p>	<p><b>COLUMBUS</b></p> <p>PRO-MESH 9147A PRO-KNIT 6147A SOCKS 9847A REGULAR</p>
<p><b>DETROIT</b></p> <p>PRO-MESH 9100R PRO-KNIT 6100R SOCKS 9800A CUSTOM PREMIUM</p>	<p><b>EDMONTON</b></p> <p>PRO-MESH 9137A PRO-KNIT 6137A SOCKS 9837A PREMIUM</p>	<p><b>EDMONTON</b></p> <p>PRO-MESH 9137H PRO-KNIT 6137H SOCKS 9837H PREMIUM</p>	<p><b>EDMONTON</b></p> <p>PRO-MESH 9137R PRO-KNIT 6137R SOCKS 9837R CUSTOM EXCEL</p>	<p><b>EDMONTON</b></p> <p>PRO-MESH 9111A PRO-KNIT 6111A • SOCKS 9811A CUSTOM REGULAR</p>	<p><b>EDMONTON</b></p> <p>PRO-MESH 9111H PRO-KNIT 6111H • SOCKS 9811H CUSTOM REGULAR</p>



CUSTOM  
MADE-TO-ORDER

IN-STOCK

\*9100  
MADE-TO-ORDER

PRICING (\$CAD / \$USD)				
PATTERN	ADULT	YOUTH	GOALIE	
regular	\$49.10 / \$52.80	\$47.30 / \$50.86	\$58.20 / \$62.58	
excel	\$58.20 / \$62.58	\$56.40 / \$60.65	\$67.30 / \$72.37	
premium	\$64.70 / \$69.57	\$62.90 / \$67.63	\$72.70 / \$78.17	
ultra	\$75.30 / \$80.97	\$73.50 / \$79.03	\$80.40 / \$86.45	
PATTERN	S	M	L	XL
9800 sock	\$12.00 / \$12.90	\$13.00 / \$13.98	\$14.50 / \$15.59	\$15.50 / \$16.67

<p><b>ATLANTA</b></p>  <p>PRO-KNIT 6146R SOCKS 9846R ULTRA</p>	<p><b>BOSTON</b></p>  <p>PRO-MESH 9132A PRO-KNIT 6132A • SOCKS 9832A PREMIUM</p>	<p><b>BOSTON</b></p>  <p>PRO-MESH 9132H PRO-KNIT 6132H • SOCKS 9832H PREMIUM</p>	<p><b>BOSTON</b></p>  <p>PRO-MESH 9104A PRO-KNIT 6104A SOCKS 9804A CUSTOM REGULAR</p>	<p><b>BOSTON</b></p>  <p>PRO-MESH 9104H PRO-KNIT 6104H SOCKS 9804H CUSTOM REGULAR</p>	<p><b>BUFFALO</b></p>  <p>PRO-KNIT 6102A • SOCKS 9802A ULTRA</p>
<p><b>CALGARY</b></p>  <p>PRO-MESH 9148A PRO-KNIT 6148A SOCKS 9848A REGULAR</p>	<p><b>CALGARY</b></p>  <p>PRO-MESH 9148H PRO-KNIT 6148H SOCKS 9848H REGULAR</p>	<p><b>CALGARY</b></p>  <p>PRO-KNIT 6148R SOCKS 9848R EXCEL</p>	<p><b>CAROLINA</b></p>  <p>PRO-KNIT 6115A SOCKS 9815A EXCEL</p>	<p><b>CAROLINA</b></p>  <p>PRO-KNIT 6115H SOCKS 98CNH EXCEL</p>	<p><b>CHICAGO</b></p>  <p>PRO-MESH 9106A PRO-KNIT 6106A • SOCKS 9806A REGULAR</p>
<p><b>COLUMBUS</b></p>  <p>PRO-MESH 9147H PRO-KNIT 6147H • SOCKS 9847H REGULAR</p>	<p><b>COLUMBUS</b></p>  <p>PRO-KNIT 6147R SOCKS 9847R EXCEL</p>	<p><b>DALLAS</b></p>  <p>PRO-MESH 9149A PRO-KNIT 6149A SOCKS 9849A ULTRA</p>	<p><b>DALLAS</b></p>  <p>PRO-MESH 9149H PRO-KNIT 6149H SOCKS 9849H ULTRA</p>	<p><b>DETROIT</b></p>  <p>PRO-MESH 9100A PRO-KNIT 6100A • SOCKS 9800A REGULAR</p>	<p><b>DETROIT</b></p>  <p>PRO-MESH 9100H PRO-KNIT 6100H • SOCKS 9800H REGULAR</p>
<p><b>FLORIDA</b></p>  <p>PRO-MESH 9128A PRO-KNIT 6128A SOCKS 9828A REGULAR</p>	<p><b>FLORIDA</b></p>  <p>PRO-MESH 9128H PRO-KNIT 6128H SOCKS 9828H REGULAR</p>	<p><b>FLORIDA</b></p>  <p>PRO-MESH 9128R PRO-KNIT 6128R SOCKS 9828R REGULAR</p>	<p><b>HARTFORD</b></p>  <p>PRO-MESH 9125A PRO-KNIT 6125A SOCKS 9825A CUSTOM REGULAR</p>	<p><b>HARTFORD</b></p>  <p>PRO-MESH 9125H PRO-KNIT 6125H SOCKS 9825H CUSTOM REGULAR</p>	<p><b>LONG ISLAND</b></p>  <p>PRO-MESH 9150A PRO-KNIT 6150A SOCKS 9850A REGULAR</p>



# HOCKEY JERSEY - PRO SERIES

\*9100  
MADE-TO-ORDER

CUSTOM  
MADE-TO-ORDER

IN-STOCK

HOCKEY

LONG ISLAND	LONG ISLAND	LOS ANGELES	LOS ANGELES	LOS ANGELES	LOS ANGELES
					
PRO-MESH 9150H PRO-KNIT 6150H • SOCKS 9850H REGULAR	PRO-KNIT 6150R SOCKS 9850R PREMIUM	PRO-MESH 9141A PRO-KNIT 6141A • SOCKS 9841A REGULAR	PRO-MESH 9141H PRO-KNIT 6141H • SOCKS 9841H REGULAR	PRO-MESH 9141R PRO-KNIT 6141R SOCKS 9841R CUSTOM EXCEL	PRO-MESH 9114A PRO-KNIT 6114A SOCKS 9814A CUSTOM REGULAR
MONTREAL	NASHVILLE	NASHVILLE	NEW JERSEY	NEW JERSEY	NEW YORK
					
PRO-MESH 9108H PRO-KNIT 6108H • SOCKS 9808H REGULAR	PRO-MESH 9143A PRO-KNIT 6143A • SOCKS 9843A PREMIUM	PRO-MESH 9143H PRO-KNIT 6143H • SOCKS 9843H PREMIUM	PRO-MESH 9123A PRO-KNIT 6123A SOCKS 9823A REGULAR	PRO-MESH 9123H PRO-KNIT 6123H SOCKS 9823H REGULAR	PRO-MESH 9145A PRO-KNIT 6145A SOCKS 9845A REGULAR
PHILADELPHIA	PHILADELPHIA	PHILADELPHIA	PHOENIX	PHOENIX	PITTSBURGH
					
PRO-MESH 9105A PRO-KNIT 6105A SOCKS 9805A REGULAR	PRO-MESH 9105H PRO-KNIT 6105H • SOCKS 9805H REGULAR	PRO-MESH 9105R PRO-KNIT 6105R • SOCKS 9805R REGULAR	PRO-KNIT 6155A SOCKS 9855A EXCEL	PRO-KNIT 6155H SOCKS 9855H EXCEL	PRO-KNIT 6166A • SOCKS 9866A EXCEL
SAN JOSE	SAN JOSE	ST. LOUIS	ST. LOUIS	TAMPA BAY	TAMPA BAY
					
PRO-MESH 9144H PRO-KNIT 6144H SOCKS 9844H PREMIUM	PRO-MESH 9144R PRO-KNIT 6144R SOCKS 9844R CUSTOM EXCEL	PRO-MESH 9142A PRO-KNIT 6142A SOCKS 9842A REGULAR	PRO-MESH 9142H PRO-KNIT 6142H SOCKS 9842H REGULAR	PRO-MESH 9121A PRO-KNIT 6121A SOCKS 9821A REGULAR	PRO-MESH 9121H PRO-KNIT 6121H SOCKS 9821H REGULAR
VANCOUVER	WASHINGTON	WASHINGTON	WINNIPEG	WINNIPEG	TEAM CANADA
					
PRO-KNIT 6154H SOCKS 9854H REGULAR	PRO-MESH 9131H PRO-KNIT 6131H SOCKS 9831H PREMIUM	PRO-MESH 9131R PRO-KNIT 6131R SOCKS 9831R PREMIUM	PRO-MESH 9103A PRO-KNIT 6103A SOCKS 9803A CUSTOM REGULAR	PRO-MESH 9103H PRO-KNIT 6103H SOCKS 9803H CUSTOM REGULAR	PRO-KNIT 6CDNA SOCKS 9823A EXCEL








CUSTOM  
MADE-TO-ORDER

IN-STOCK

\*9100  
MADE-TO-ORDER

HOCKEY JERSEY - PRO SERIES

HOCKEY

LOS ANGELES	MINNESOTA	MINNESOTA	MINNESOTA	MINNESOTA	MONTREAL
					
PRO-MESH 9114H PRO-KNIT 6114H SOCKS 9814H CUSTOM REGULAR	PRO-KNIT 6156A SOCKS 9856A EXCEL	PRO-KNIT 6156H SOCKS 9856H EXCEL	PRO-MESH 9151A PRO-KNIT 6151A SOCKS 9851A CUSTOM REGULAR	PRO-MESH 9151H PRO-KNIT 6151H SOCKS 9851H CUSTOM REGULAR	PRO-MESH 9108A PRO-KNIT 6108A • SOCKS 9808A REGULAR
NEW YORK	NEW YORK	NEW YORK	OTTAWA	OTTAWA	OTTAWA
					
PRO-MESH 9145H PRO-KNIT 6145H SOCKS 9845H REGULAR	PRO-MESH 9118A PRO-KNIT 6118A SOCKS 9818A REGULAR	PRO-MESH 9118H PRO-KNIT 6118H • SOCKS 9818H REGULAR	PRO-MESH 9133A PRO-KNIT 6133A SOCKS 9833A REGULAR	PRO-MESH 9133H PRO-KNIT 6133H SOCKS 9833H REGULAR	PRO-MESH 9133R PRO-KNIT 6133R SOCKS 9823A REGULAR
PITTSBURGH	PITTSBURGH	PITTSBURGH	QUEBEC	QUEBEC	SAN JOSE
					
PRO-KNIT 6166H • SOCKS 9866H EXCEL	PRO-KNIT 6152A SOCKS 9852A EXCEL	PRO-KNIT 6152H SOCKS 9852H EXCEL	PRO-MESH 9153A PRO-KNIT 6153A SOCKS 9853A CUSTOM REGULAR	PRO-MESH 9153H PRO-KNIT 6153H SOCKS 9853H CUSTOM REGULAR	PRO-MESH 9144A PRO-KNIT 6144A SOCKS 9844A PREMIUM
TORONTO	TORONTO	TORONTO	VANCOUVER	VANCOUVER	VANCOUVER
					
PRO-MESH 9124A PRO-KNIT 6124A • SOCKS 9824A REGULAR	PRO-MESH 9124H PRO-KNIT 6124H • SOCKS 9824H REGULAR	PRO-KNIT 6124R • SOCKS 9824H PREMIUM	PRO-MESH 9138A PRO-KNIT 6138A SOCKS 9838A REGULAR	PRO-MESH 9138H PRO-KNIT 6138H SOCKS 9838H REGULAR	PRO-KNIT 6154A • SOCKS 9854A REGULAR
TEAM CANADA	TEAM CANADA	TEAM USA	TEAM USA	<p>* Actual colours may vary from printed colours shown here. All patterns available in any colour combination. Custom pricing may apply.</p> <p>For more information please contact our Custom Department at 1-888-898-5623.</p>	
					
PRO-KNIT 6CDNH SOCKS 98CNH EXCEL	PRO-KNIT 6CDNR SOCKS 9806R CUSTOM PREMIUM	PRO-KNIT 6USAA SOCKS 98USA PREMIUM	PRO-KNIT 6USAH SOCKS 98USH PREMIUM		



# HOCKEY JERSEY - TEAM SERIES



## 6200 TEAM SERIES

### HEAVYWEIGHT PRO-KNIT

- 150 Denier Yarn Construction
- Small Pinpoint Airholes
- Ideal for Screen Appliques

FABRIC: 100% Polyester

SIZES: Adult S-3XL / Youth S-XL / Goalie

MSRP: **CAD \$32.00 / \$31.00 / \$38.00**

**USD \$34.41 / \$33.33 / \$40.86**



GOALIE CUT: wider & shorter sleeves, extra large armholes

PRO-KNIT 6205A SOCKS 9808A	PRO-KNIT 6206A SOCKS 9826A	PRO-KNIT 6210A SOCKS 9823A	PRO-KNIT 6215A SOCKS 9805A	PRO-KNIT 6228A SOCKS 9828A	PRO-KNIT 6231A SOCKS 9831A	PRO-KNIT 6241A SOCKS 9841A	PRO-KNIT 6242A SOCKS 9842A
PRO-KNIT 6205H SOCKS 9808H	PRO-KNIT 6206H SOCKS 9826H	PRO-KNIT 6210H SOCKS 9823H	PRO-KNIT 6215H SOCKS 9805H	PRO-KNIT 6228H SOCKS 9828H	PRO-KNIT 6231H SOCKS 9831H	PRO-KNIT 6241H SOCKS 9841H	PRO-KNIT 6242H SOCKS 9842H
PRO-KNIT 6216A SOCKS 9818A	PRO-KNIT 6206R SOCKS 9832A	PRO-KNIT 6210R SOCKS 9806R	PRO-KNIT 6215R SOCKS 9805R	PRO-KNIT 6228R SOCKS 9828R	PRO-KNIT 6231R SOCKS 9831R	PRO-KNIT 6241R SOCKS 9841R	PRO-KNIT 6243A SOCKS 9843A
PRO-KNIT 6200A SOCKS 9844A	PRO-KNIT 6207A SOCKS 9807A	PRO-KNIT 6214A SOCKS 9824A	PRO-KNIT 6219A SOCKS 9827A	PRO-KNIT 6235A SOCKS 9835A	PRO-KNIT 6245A SOCKS 9845A	PRO-KNIT 6251A SOCKS 9849A	
PRO-KNIT 6200H SOCKS 9844H	PRO-KNIT 6207H SOCKS 9807H	PRO-KNIT 6214H SOCKS 9824H	PRO-KNIT 6219H SOCKS 9827H	PRO-KNIT 6235H SOCKS 9835H	PRO-KNIT 6245H SOCKS 9845H	PRO-KNIT 6251H SOCKS 9849H	
PRO-KNIT 6200R SOCKS 9800 GREY	PRO-KNIT 6207R SOCKS 9800 KELLY	PRO-KNIT 6252A SOCKS 9852A					



# PRACTICE JERSEYS



## MID-WEIGHT PRO-KNIT

- Single Shoulders & Elbows

FABRIC: 100% Polyester

SIZES:

Adult S-3XL / Youth S-XL / Goalie



### PRICING (\$CAD / \$USD)

STYLE	ADULT	YOUTH	GOALIE
5450	\$28.00 / \$30.11	\$27.00 / \$29.03	\$33.00 / \$35.48
5300	\$22.20 / \$23.87	\$20.90 / \$22.47	\$28.70 / \$30.86
5400	\$18.50 / \$19.89	\$17.50 / \$18.82	\$23.50 / \$25.27
9500	\$16.40 / \$17.63	\$14.30 / \$15.38	n/a

STYLE	S	M	L	XL
9800	\$12.00 / \$12.90	\$13.00 / \$13.98	\$14.50 / \$15.59	\$15.50 / \$16.67

## 5400 MID-WEIGHT PRO-KNIT PRACTICE JERSEYS



WHITE GOLD BRIGHT ORANGE RED MAROON PINK POWDER ROYAL NAVY TEAL KELLY FOREST GREY BLACK

## 5450 MID-WEIGHT PRO-KNIT PREMIUM JERSEYS



WHITE/BLACK GOLD/WHITE BRIGHT ORANGE/WHITE RED/WHITE MAROON/WHITE PINK/WHITE POWDER/WHITE



ROYAL/WHITE NAVY/WHITE TEAL/WHITE KELLY/WHITE FOREST/WHITE GREY/WHITE BLACK/WHITE

## 5300 MID-WEIGHT PRO-KNIT HOUSE LEAGUE JERSEYS



WHITE/BLACK ROYAL/WHITE WHITE/ROYAL RED/WHITE WHITE/RED BLACK/GOLD GOLD/BLACK TEAL/BLACK KELLY/GOLD MAROON/WHITE

## 9800 PRACTICE SOCKS



L TO R: WHITE, GOLD, BRIGHT ORANGE, RED, MAROON, PINK, POWDER, ROYAL, NAVY, TEAL, KELLY, FOREST, GREY, BLACK. HEAVYWEIGHT 85% POLYESTER, 35% COTTON. THE FOLLOWING 9800 KNIT PRACTICE SOCKS ARE COMPATIBLE WITH K3G AMATEUR SERIES JERSEYS. WHITE, GOLD, RED, MAROON, ROYAL, NAVY, KELLY, FOREST, GREY, BLACK.

## 9500 HEAVY-WEIGHT PRO-MESH SCRIMMAGE VESTS



L TO R: WHITE, GOLD, RED, ROYAL, KELLY, BLACK. SIZES: ADULT L & 2XL, YOUTH XL

# RAMPAGE



## HOCKEY PANT SHELL

- Reinforced Attachment Loops
- Nylon Belt with Buckle
- Optional Pro Striping (HPS2010CA/CY)

FABRIC: 420 Denier Nylon Oxford

SIZES: Adult S-3XL / Youth S-XL

MSRP: BLANK (HPS2010A/Y)

**CAD \$56.40 / \$50.90**

**USD \$60.65 / \$54.73**

1 - 4 STRIPES (HPS2010CA/CY)

**CAD \$60.40 / \$54.90**

**USD \$64.95 / \$59.03**



CUSTOM AVAILABLE DECORATION APPLICABLE DOMESTIC

Pro - Striping Colour Options - Dazzle Fabric



Pro - Striping Colour Options - 6100 Fabric



### HPS2010A/Y



RED  
RE

### HPS2010CA/CY



RED  
RE  
\*WITH  
STRIPING



ROYAL  
RO

BLACK  
BL

NAVY  
NA



ROYAL  
RO

BLACK  
BL

NAVY  
NA

\*WITH STRIPING \*WITH STRIPING \*WITH STRIPING

# REF JERSEY



## SUBLIMATED

FABRIC: Optional Double Reinforced Shoulder/Elbow with Two Needle Cover Stitch

SIZES: 100% Polyester

MSRP: Adult S-3XL / Youth S-XL

**CAD \$120.00**



CUSTOM AVAILABLE DECORATION APPLICABLE DOMESTIC



## HOCKEY JERSEY DECORATION OPTIONS



KOBE STYLE #1

KOBE STYLE #2

KOBE STYLE #3

KEYHOLE V-NECK

K3G STYLE #1

K3G STYLE #2

K3G STYLE #3

K3G STYLE #4



TI-DOWN STRAP



PORT HOLE SIDE  
INSERTS



GUSSETS



CANADA FLAG  
3" X 2"



USA FLAG  
3" X 2"



STOP SIGN  
3" X 3"

NAMES & NUMBERS AVAILABLE SUBLIMATED/TACKLE TWILL/THERMO FILM/PIN STRIPE SCREEN All of the custom features above can be applied to stock jerseys as a custom order - custom pricing will apply.



OFFICIAL

**OMHA  
JERSEY**

PROGRAM



Kobe Sportswear and the Ontario Minor Hockey Association are pleased to continue the exciting jersey program for local hockey associations.

The official OMHA branded Jersey complete with STOP patch and OMHA crest will be available through Kobe Sportswear authorized dealers in one low cost package.

### HOW TO GET AN OFFICIAL OMHA JERSEY

step

1

Contact your local jersey supplier to inquire if they carry the KOBE line.

step

2

If they do, ask how your Association can get the OMHA jersey. If they do not, call Kobe Sportswear (1-888-898-5623) for your nearest local KOBE dealer.

step

3

Choose your KOBE jersey style and any additional decoration details.

 /KobeSportswear  @KobeSportswear

For more information and to see all the available jersey styles for your official OMHA Jersey, visit [kobesportswear.com/OMHA](http://kobesportswear.com/OMHA)

### Package Includes:

#### PLAYER CREST

size: 1.25" x 0.80"

Applied on the collar gusset or directly below

#### KOBE STOP PATCH

size: 2.88" x 2.88"

Applied on back of jersey above name bar



**KOBE.**  
KOBESPORTSWEAR.COM

POWERING  WORLDWIDE

  
OMHA



# CUT & SEW HOCKEY JERSEY

MEN'S / LADIES

MADE IN  
CANADA

2 COLOUR  
K38 COLLAR #1

EMBROIDERY

FRONT TWILL  
APPLIQUE

## DECORATION SERVICES

### SCREEN PRINTING

Offers you a smooth and even look to your decoration

### TWILL APPLIQUE

Great for name/sponsor bars and numbers. Combined with embroidery or screen printing, tackle twill provides a solid backing for your graphics, minimizing warping and distortion.

### THERMO FILM

Fast and easy, great for name/sponsor bars and numbers.

### EMBROIDERY

Excellent for logos, name/sponsor bars, numbers and STOP signs. Always looks great and gives you a more traditional look.

(See p. 105 for more details)

\*Final pricing may vary based on decoration service, design, quantity, and sizing.





MADE IN  
CANADA

# SUBLIMATED HOCKEY JERSEY

MEN'S / LADIES

HOCKEY

2 COLOUR  
K3G COLLAR #1

SUPERIOR  
SUBLIMATED  
GRAPHICS

- Optional double reinforced shoulder  
double elbow with two needle  
cover stitch

**FABRIC:** 100% polyester, heavy weight  
pro-knit or K3G fabric

**SIZES:** Adult S-3XL & Goalie /  
Youth S-XL / Ladies S-L



CUSTOM  
AVAILABLE



DECORATION  
APPLICABLE



DOMESTIC

**MSRP:** Sublimated Jersey (61 Pro Knit)

**Adult \$89.99**

**Youth \$89.00**

**Goalie \$95.00**

Sublimated Jersey (K3G)

**Adult \$109.99**

**Youth \$108.99**

**Goalie \$114.99**

Sublimated Pantshell

**\$89.99**

Sublimated Socks (61+Velcro)

**\$45.99**

Sublimated Socks (K3G+Velcro)

**\$49.99**

\*Pricing based on order qty of 6-30pcs.  
Final pricing may vary based on design,  
quantity, and sizing.





# SUBLIMATION SERIES



## KOBE SUBLIMATION ADVANTAGE

With our sublimation transfer process, you can print high quality digital images on a huge variety of items not possible with traditional screen printing or thermo transfers. The vibrant colours and details offered by this technology are unparalleled, making it the most effective way in communicating your message and brand.

ALL-STAR VINTAGE



AWAY

ALL-STAR VINTAGE



HOME

BOSTON COLLEGIATE



AWAY

BOSTON COLLEGIATE



HOME

BOSTON VINTAGE



A

BOSTON VINTAGE



B

BRAMPTON



AWAY

BRAMPTON



HOME

BRANDON



AWAY

BRANDON



HOME

CANADA VINTAGE



AWAY

CANADA VINTAGE



HOME

DALLAS



AWAY

DALLAS



HOME

MAINE



NOTRE DAME



THIRD



NOTRE DAME

NOTRE DAME

OTTAWA VINTAGE "A"

OTTAWA VINTAGE "A"



AWAY

HOME

AWAY

HOME

OTTAWA VINTAGE "B"

OWEN SOUND

OWEN SOUND

VANCOUVER



AWAY

HOME

PETERBOROUGH

PETERBOROUGH

QUEBEC VINTAGE

QUEBEC VINTAGE



AWAY

HOME

AWAY

HOME

WASHINGTON

WASHINGTON

SIOUX FALLS

SIOUX FALLS



AWAY

HOME

AWAY

HOME

RIMOUSKI

RIMOUSKI

LOS ANGELES

LOS ANGELES



AWAY

HOME

AWAY

HOME

# REINFORCED HOCKEY WHEELBAG

WTB1236

WTB1240

- Leather Wrapped Handle
- Internal Skate Pockets
- External Decoration Panel
- Clear I.D. Window
- Two Bottom Inline Wheels
- Top Centre Opening
- Durable PVC Bottom
- Multiple Decoration Locations

FABRIC: 1200 Denier Polyester, PVC-Coated

SIZES: 36" X 17"W X 17"H  
40" X 18"W X 18"H

MSRP: CAD \$103.10 / \$121.80  
USD \$110.86 / \$130.97



WATER RESISTANT



CUSTOM AVAILABLE



DECORATIONS APPLICABLE



IMPORT



BLACK/ORANGE  
BL/OR



NAVY/RED  
NA/RE

NAVY/WHITE  
NA/WH

BLACK/RED  
BL/RE

NAVY/GOLD  
NA/GO

BLACK/GOLD  
BL/GO

BLACK/WHITE  
BL/WH

# REINFORCED TEAM HOCKEY BAG

RTB1230\*

RTB1236

RTB1240

- Leather Wrapped Handle
- Internal Skate Pockets
- Clear I.D. Window
- Top Centre Opening
- Durable PVC Bottom
- Multiple Decoration Locations

FABRIC: 1200 Denier Polyester, PVC-Coated

SIZES: 30" X 15"W X 15"H  
36" X 17"W X 17"H  
40" X 18"W X 18"H

MSRP: CAD \$60.00 / \$72.70 / \$82.90  
USD \$64.52 / \$78.17 / \$89.14



WATER RESISTANT



CUSTOM AVAILABLE



DECORATIONS APPLICABLE



IMPORT



BLACK/ORANGE  
BL/OR



NAVY/GOLD  
NA/GO

NAVY/RED  
NA/RE

BLACK/WHITE  
BL/WH

NAVY/WHITE  
NA/WH

BLACK/RED  
BL/RE

BLACK/GOLD  
BL/GO

\*ONLY AVAILABLE IN NAVY/WHITE, BLACK/WHITE



# DELUXE HOCKEY BAG

## DL60040

- U-Shape Two-Way Zipper Top Opening
- Adjustable/Detachable Shoulder Strap with Swivel Buckles & Velcro Closure
- Piped Seams for Reinforcement
- Clear Plastic I.D. Window
- Two Exterior Skate Pockets with D-Ring Lock
- Two End Utility Compartments

**FABRIC:** 600 Denier Polyester, PVC-Coated

**SIZES:** 40"L X 16"W X 16"H

**MSRP:** **CAD \$61.60**  
**USD \$66.24**



BLACK  
BL

# UTILITY BAG

## HB60036 HB60042

- Piped Seams for Reinforcement
- Clear Plastic I.D. Window
- Wrap Around Carrying Handles with Reinforced Stitching and Velcro Closure
- Ventilation Grommets
- Centre Top Zipper Opening

**FABRIC:** 600 Denier Polyester, PVC-Coated

**SIZES:** 36" X 16"W X 17"H  
42" X 19"W X 19"H

**MSRP:** **CAD \$31.30 / \$36.40**  
**USD \$33.66 / \$39.14**



BLACK/RED  
BL/RE



RED  
RE

ROYAL  
RO

BLACK  
BL

NAVY  
NA

# HOCKEY STICK BAG

## STB10

- Durable Carrying Straps with Contrast Stitching
- Zipper Opening with Rubber Pull

**FABRIC:** 600 Denier Polyester, PVC-Coated

**SIZES:** 62"L X 6"W X 14"H

**MSRP:** **CAD \$17.50**  
**USD \$18.82**



BLACK  
BL



# BASEBALL

7 STYLES  
IN-STOCK

SLIDER p47

p50 DASH

\*CUSTOM PIPING

BOTTOM  
OF  
THE

9TH  
BASE  
LOADERS



**SLIDER** 

**BB14A/Y**

**TWO BUTTON SOFT TECH MESH  
BASEBALL JERSEY**

**KST**

**FABRIC:** KST Quick Drying Mesh

**SIZES:** Adult S-3XL / Youth S-XL

**MSRP:** **CAD \$41.30 / \$39.50**

**USD \$44.10 / \$42.47**



MOISTURE  
WICKING



MOISTURE  
WICKING



DECORATION  
APPLICABLE



CUSTOM  
AVAILABLE



DOMESTIC



RED/WHITE  
RE/WH



BLACK/RED  
BL/RE



BLACK/WHITE  
BL/WH



NAVY/RED  
NA/RE



NAVY/WHITE  
NA/WH



WHITE/BLACK  
WH/BL



WHITE/NAVY  
WH/NA



WHITE/RED  
WH/RE

BASEBALL

# PUNCHOUT

## K3G BB4A/Y

V-NECK BASEBALL HOUSE LEAGUE JESREY 

FABRIC: K3G Fabric, 100% Polyester

SIZES: Adult S-3XL / Youth S-XL

MSRP: **CAD \$22.20 / \$20.40**

**USD \$23.87 / \$21.94**



NAVY/WHITE  
NA/WH



ORANGE/WHITE  
OR/WH

BLACK/GOLD  
BL/GD

GOLD/BLACK  
GD/BL

BLACK/WHITE  
BL/WH

WHITE/BLACK  
WH/BL

WHITE/RED  
WH/RE

GREY/WHITE  
GR/WH

MAROON/WHITE  
MA/WH

TEAL/WHITE  
TE/WH

RED/WHITE  
RE/WH

WHITE/ROYAL  
WH/RO

ROYAL/WHITE  
RO/WH



# CUSTOMIZE YOUR JERSEY

PERSONALIZE YOUR JERSEY  
WITH OUR MANY  
DECORATION OPTIONS  
SEE p.105



PUNCHOUT P48

DASH P50  
\*CUSTOM PIPING

**CLOSER** MADE IN CANADA

**K3GBB3A/Y**

**TWO BUTTON SHORT SLEEVE  
BASEBALL JERSEY**



**FABRIC:** K3G Fabric, 100% Polyester

**SIZES:** Adult S-3XL / Youth S-XL

**MSRP:** **CAD \$37.50 / \$35.60**

**USD \$40.32 / \$38.28**



GOLD  
GO

NAVY  
NA

TEAL  
TE

GREY  
GR

MARON  
MA

ORANGE  
OO

WHITE  
WH

BLACK  
BL

ROYAL  
RO



RED  
RE

**DASH** MADE IN CANADA

**K3GBBPA/Y**

**K3G BASEBALL PANT**

**FABRIC:** 100% Polyester Wrap Knit

**SIZES:** Adult S-3XL / Youth S-XL

**MSRP:** **CAD \$57.50 / \$55.60**

**USD \$61.83 / \$59.78**



WHITE  
WH

GREY  
GR



BLACK  
BL



# TRIPLE CROWN



**K3G BB1A/Y**

**FULL BUTTON  
BASEBALL JERSEY**



**FABRIC:** K3G Fabric, 100% Polyester

**SIZES:** Adult S-3XL / Youth S-XL

**MSRP:** CAD \$37.50 / \$35.60

USD \$40.32 / \$38.28



BREATHABLE



DECORATION  
APPLICABLE



CUSTOM  
AVAILABLE



DOMESTIC



ROYAL  
RO



GREY  
GR



MAROON  
MA



ORANGE  
OR



WHITE  
WH



BLACK  
BL



GOLD  
GO



NAVY  
NA



TEAL  
TE



RED  
RE

BASEBALL

# ACE



**K3G BB2A/Y**

**FULL BUTTON  
BASEBALL VEST**



**FABRIC:** K3G Fabric, 100% Polyester

**SIZES:** Adult S-3XL / Youth S-XL

**MSRP:** CAD \$33.60 / \$31.80

USD \$36.13 / \$34.19



BREATHABLE



DECORATION  
APPLICABLE



CUSTOM  
AVAILABLE



DOMESTIC



BLACK  
BL



WHITE  
WH



NAVY  
NA



ROYAL  
RO



GOLD  
GO



RED  
RE

# CUT & SEW BASEBALL JERSEY



- 150 Denier Yarn Construction with Small Pinpoint Air Holes

FABRIC: K3G or 6100 Pro-Knit

SIZES: Adult S-3XL / Youth S-XL

\*See p. 105 for decoration details

Price may vary + Artwork charges



DECORATION  
APPLICABLE



CUSTOM  
AVAILABLE



DOMESTIC





# SUBLIMATED BASEBALL JERSEY

MADE IN  
CANADA

- 150 Denier Yarn Construction with Small Pinpoint Air Holes

FABRIC: K3G or 6100 Pro-Knit

SIZES: Adult S-3XL / Youth S-XL

MSRP\*: **61 PRO KNIT**

BB1 \$84.00

BB2 \$76.00

BB3 \$86.00

BB4 \$74.00

**K3G**

BB1 \$90.00

\*Pricing based on order qty of 6-30 pcs.  
Final pricing may vary based on design,  
quantity and sizing

\*All Sublimated Baseball Styles Available in  
K3G Material. Please Call for Pricing.

Price may vary + Artwork charges



BASEBALL



# BASKETBALL

6 STYLES  
IN-STOCK

SWINGMAN p55

p55 FASTBREAK

SHOOT  
THE  
LIGHTS  
OUT



# SWINGMAN

8916A/Y

## KST REVERSIBLE PERFORMANCE VEST

- Moisture Wicking Technology
- Enhanced Breathability
- Two Needle, Cover Stitched Seams
- Reversible Style Offers Two Colour Options

FABRIC: KST Quick Drying Mesh

SIZES: Adult S-3XL / Youth S-XL

MSRP: **CAD \$28.70 / \$26.90**

**USD \$30.86 / \$28.92**



RED/BLACK  
REB



RED/WHITE  
RE/WH

BLACK/WHITE  
BL/WH

BLACK/GOLD  
BGD

NAVY/RED  
NAR

NAVY/WHITE  
NA/WH

# FASTBREAK

8917A/Y

## KST PERFORMANCE MESH SHORT

- Moisture Wicking Technology
- Enhanced Breathability
- Two Needle, Cover Stitched Seams
- Three Needle 1.5" Waistband with Hidden Tunnel Drawstrings
- Single Layer KST Mesh

FABRIC: KST Quick Drying Mesh

SIZES: Adult S-3XL / Youth S-XL

MSRP: **CAD \$21.00 / \$19.30**

**USD \$22.58 / \$20.75**



BLACK  
BL



NAVY  
NA

WHITE  
WH

RED  
RE

# CUT & SEW BASKETBALL JERSEY / SHORTS



- 150 Denier Yarn Construction with Small Pinpoint Air Holes

FABRIC: 100% Polyester Material, Heavy Weight Pro-Knit, K3G

SIZES: Adult S-3XL / Youth M-XL

MSRP\*: **PRO CUT**

K3G JERSEY **\$35.00 / \$34.00**

K3G SHORTS **\$35.00 / \$34.00**

**REGULAR CUT**

JERSEY (Pro-Knit) **\$30.00 / \$29.00**

SHORTS (Pro-Knit) **\$21.00 / \$20.00**

**MADE TO ORDER**



Price may vary + Artwork charges

\*Pricing based on order qty of 6-30 pcs. Final pricing may vary based on design, quantity and sizing



RED



## PRO CUT



FOREST GREEN KELLY GREEN TEAL ROYAL AVIATOR BLUE STEEL BLUE NAVY BLACK



PURPLE MAROON BURNT ORANGE CITRUS ORANGE GOLD OLD GOLD WHEAT WHITE



RED



## REGULAR CUT



FOREST GREEN KELLY GREEN TEAL ROYAL AVIATOR BLUE STEEL BLUE NAVY BLACK



PURPLE MAROON BURNT ORANGE CITRUS ORANGE GOLD OLD GOLD WHEAT WHITE



# SUBLIMATED BASKETBALL JERSEY / SHORTS

MADE IN  
CANADA

- 150 Denier Yarn Construction with Small Pinpoint Air Holes  
FABRIC: 100% Polyester Material, Heavy Weight Pro-Knit, K3G  
SIZES: Adult S-3XL / Youth M-XL

MADE TO ORDER

Price may vary + Artwork charges

\*Pricing based on order qty of 6-30 pcs.  
Final pricing may vary based on design,  
quantity and sizing

## MSRP: REGULAR CUT

JERSEY \$70.00 / \$69.00

SHORTS \$65.00 / \$64.00

## ALSO AVAILABLE IN:

## MSRP: PRO CUT

JERSEY \$80.00 / \$79.00

SHORTS \$65.00 / \$64.00





8 STYLES  
IN-STOCK

# LACROSSE

p59 HAMMER

p59 ATTACK

CALL IT  
ALL THE TIME



# HAMMER\* MADE IN CANADA

K3G FIELD LACROSSE JERSEY

## FIELDLAX A/Y K3G

FABRIC: K3G, 100% Polyester Knit

SIZES: Adult S-3XL / Youth S-XL

MSRP: **CAD \$39.00 / \$38.00**

**USD \$42.00 / \$41.00**



**\*MADE TO ORDER**

**12 PCS MINIMUM ORDER  
3 WEEK TURNAROUND**



BURNT ORANGE

LACROSSE



# ATTACK MADE IN CANADA

## 8901A/Y

DAZZLE UNLINED SHORTS

- Three Needle 1.5" Waistband with Hidden Tunnel Drawstrings
- Two Needle stitched Seams

FABRIC: 100% Polyester Heavy Dazzle

SIZES: Adult S-3XL / Youth S-XL

MSRP: **CAD \$24.40 / \$23.30**

**USD \$26.24 / \$25.05**



ROYAL BL



# FASTBREAK MADE IN CANADA

## 8917A/Y

KST PERFORMANCE MESH SHORTS



- Three-Needle 1.5" Waistband with Hidden Tunnel Drawstrings
- Two-Needle, Cover Stitched Seams
- Moisture Wicking Technology
- Enhanced Breathability
- Single Layer KST Mesh

FABRIC: KST Quick Drying Mesh

SIZES: Adult S-3XL / Youth S-XL

MSRP: **CAD \$21.00 / \$19.30**

**USD \$22.58 / \$20.75**



BLACK BL



# LACROSSE/ INLINE JERSEY



## 3100 SERIES LACROSSE

**FABRIC:** - 100% Polyester  
Lightweight Mesh  
- 100% Polyester  
Port-hole Mesh

**SIZES:** Adult S-3XL / Youth M, XL / Goalie

**MSRP:** CAD \$27.80 / \$34.50 / \$26.00  
USD \$29.89 / \$37.10 / \$27.96



# CUT & SEW LACROSSE INLINE JERSEY



- 150 Denier Yarn Construction with  
Small Pinpoint Air Holes

**FABRIC:** 100% Polyester,  
Heavy Wight Pro-Knit

**SIZES:** Adult S-3XL / Youth M-XL / Goalie



Price may vary + Artwork charges

### style #1 heavyweight mesh - 9100 fabric



### style #2 heavyweight knit - 6100/dazzle/port hole mesh



A. DAZZLE FABRIC. B. PRO-KNIT 6100 FABRIC. C. PORT HOLE MESH

### style #3 lightweight mesh - 9700 fabric





# SUBLIMATED FIELD/BOX LACROSSE JERSEY

MADE IN CANADA

- 150 Denier Yarn Construction with Small Pinpoint Air Holes

FABRIC: 100% Polyester Knit + Port-Hole Mesh

SIZES: Adult S-3XL / Youth S-XL / Goalie

MSRP\*: CAD \$90.00 / \$96.00 / 89.00



CUSTOM AVAILABLE DECORATION APPLICABLE DOMESTIC

Price may vary + Artwork charges



LACROSSE



PET SUBLIMATED  
FIELD/BOX LACROSSE



# PERFORMANCE

p64 AGGRESSION

FASTBREAK p66



KOBE Atlético | ADRIAN VASCONCELOS, Toronto Attack



**18** STYLES  
IN-STOCK

PERFORMANCE

WINNING  
IS DONE  
BEHIND THE  
SCENES

# AGGRESSION MADE IN CANADA

MENS 8914A/Y  
LADIES 8914L



**ATHLETIC SHIRT**

- Contrast Flat-lock Stitching
- Comfort Crew Neck
- Moisture Wicking Technology
- Enhanced Breathability

FABRIC: KST Quick Drying Mesh

MEN'S SIZES: S-3XL / Youth S-XL

MSRP: **CAD \$31.60 / \$29.80**  
**USD \$33.98 / \$32.04**

LADIES SIZES: S-2XL

MSRP: **CAD \$31.60**  
**USD \$33.98**



NAVY/WHITE  
NA/WH



RED/WHITE  
RE/WH



RED/WHITE  
RE/WH



BLACK/WHITE  
BL/WH



BLACK/RED  
BL/RE



BLACK/WHITE  
BL/WH



NAVY/RED  
NA/R



WHITE/BLACK  
WH/BL



BLACK/RED  
BL/R



NAVY/RED  
NA/R



WHITE/BLACK  
WH/BL



NAVY/WHITE  
NA/WH

Need more colours?  
Customize your Aggression shirt and Aggression LS with made-to-order colours:





# AGGRESSION LS

8915A/Y

LONG SLEEVE  
ATHLETIC SHIRT

MADE WITH  
**KST**

- Contrast Flat-lock Stitching
- Comfort Crew Neck
- Moisture Wicking Technology
- Enhanced Breathability

**FABRIC:** KST Quick Drying Mesh

**SIZES:** Adult S-3XL / Youth S-XL

**MSRP:** CAD \$36.40 / \$34.60

USD \$39.14 / \$37.20



RED/WHITE  
RE/WH



BLACK / RED  
BLR

NAVY / WHITE  
NA/WH

NAVY / RED  
NAR

WHITE / BLACK  
WH/BL

BLACK / WHITE  
BL/WH

*Need more colours?  
Customize your Aggression shirt and Aggression LS with made-to-order colours:*



PERFORMANCE

# SWINGMAN



8916A/Y

**KST REVERSIBLE PERFORMANCE VEST**



- Two-Needle, Cover Stitched Seams
- Moisture Wicking Technology
- Enhanced Breathability
- Reversible for Two Colour Options

**FABRIC:** KST Quick Drying Mesh

**SIZES:** Adult S-3XL / Youth S-XL

**MSRP:** CAD \$28.70 / \$26.90

USD \$30.86 / \$28.92



BLACK/GOLD  
BGO



BLACK/RED  
BRE

BLACK/WHITE  
BL/WH

RED/WHITE  
RE/WH

NAVY/WHITE  
NA/WH

NAVY/RED  
NAR

# FASTBREAK



8917A/Y

**KST PERFORMANCE MESH SHORTS**



- Three-Needle 1.5" Waistband with Hidden Tunnel Drawstrings
- Two-Needle, Cover Stitched Seams
- Moisture Wicking Technology
- Enhanced Breathability
- Single Layer KST Mesh

**FABRIC:** KST Quick Drying Mesh

**SIZES:** Adult S-3XL / Youth S-XL

**MSRP:** CAD \$21.00 / \$19.30

USD \$22.58 / \$20.75



BLACK  
BL



NAVY  
NA

WHITE  
WH

RED  
RE



# KOBE CAP

## KOBEHAT

### KOBE Branded TEAM HAT

- Pre-Curved Peak
- Fabric Covered Touch Strap
- Mesh Back Panel

SIZES: One Size Fits All

MSRP: **CAD \$14.00**

**USD \$15.00**

COLOURS: BLACK (BL), NAVY (NA)

# DANGLER



## 8950HL

### NXT HOCKEY LACE HOODIE



- Moisture Management Technology
- Kangaroo Pouch Pocket
- Double Layer Hood
- Custom Lace Options

**FABRIC:** 100% NXT Moisture Management Poly Fleece

SIZES: Adult XS-3XL

MSRP: **CAD \$67.00**

**USD \$72.04**



BLACK  
BL



METALLIC  
MET



ASH GREY  
AG



ROYAL  
RO



WHITE  
WH



NAVY  
NA



RED  
RE

Customize your DANGLER with these available lace colours



white white/black white/navy black/white pink/black red/black royal/white kelly/black gold/black purple/white powder/navy orange/black

# SHOW STOPPER

8955A/Y

**FULL ZIP  
PERFORMANCE HOODIE**



- Draw Cord with Metal Tips  
(Available on Adult Sizes Only)
- Pouch Pockets
- Reverse Zipper

**FABRIC:** 100% NXT Moisture Management Poly Fleece

**SIZES:** Adult S-3XL / Youth S-XL

**MSRP:** **CAD \$65.50 / \$63.60**

**USD \$70.43 / \$68.39**



ROYAL  
R0



METALLIC  
MET



NAVY  
NA



RED  
RE



BLACK  
BL



WHITE  
WH



ASH GREY  
AG



# CARRIER

## 8950A/Y

### PERFORMANCE HOODIE



- Draw Cord with Metal Tips  
(Available on Adult Sizes Only)
- Kangaroo Pouch Pockets

**FABRIC:** 100% NXT Moisture Management Poly Fleece

**SIZES:** Adult S-3XL / Youth S-XL

**MSRP:** **CAD \$55.10 / \$53.30**

**USD \$59.25 / \$57.31**



BREATHABLE



MOISTURE MANAGEMENT



DECORATION APPLICABLE



CUSTOM AVAILABLE



DOMESTIC



RED  
RE

PERFORMANCE



BLACK  
BL



METALLIC  
MET



WHITE  
WH



NAVY  
NA



ASH GREY  
AG



ROYAL  
RR

# CLUTCH

## 8960A/Y

### PERFORMANCE PANT



- Elasticized Waist with Drawstrings
- Open Hem Cuffs
- Two Side Pockets

**FABRIC:** 100% NXT Moisture Management Poly Fleece

**SIZES:** Adult S-3XL / Youth S-XL

**MSRP:** **CAD \$37.60 / \$35.80**

**USD \$40.43 / \$38.49**



BREATHABLE



MOISTURE MANAGEMENT



DECORATION APPLICABLE



CUSTOM AVAILABLE



DOMESTIC



BLACK  
BL



NAVY  
NA



BLACK  
BL

# GRIP LS

8909A/Y

## LONG SLEEVE COMPRESSION SHIRT

- Fitted Crew Neck Styling

**FABRIC:** Dri-Grip Compression  
83% Polyester, 17% Spandex

**SIZES:** Adult S-3XL / Youth S-XL

**MSRP:** CAD \$28.20 / \$26.40

USD \$30.32 / \$28.39



WHITE  
WH



NAVY  
NA

## COMPRESSION PACKAGE LS

8909A/Y - LONG SLEEVE COMPRESSION SHIRT  
8913A/Y - COMPRESSION PANTS

**MSRP:** CAD \$54.00 / \$52.00

USD \$58.06 / \$55.91



BLACK  
BL

# ENDURANCE

8913A/Y

## COMPRESSION PANTS

- "KOBE" Branded  
Elasticized Waistband

**FABRIC:** Dri-Grip Compression  
83% Polyester, 17% Spandex

**SIZES:** Adult S-3XL / Youth S-XL

**MSRP:** CAD \$43.60 / \$41.80

USD \$46.88 / \$44.95



NAVY  
NA



**GRIP** 

**8910A/Y**

**SHORT SLEEVE  
COMPRESSION SHIRT**

- Fitted Crew Neck Styling

**FABRIC:** Dri-Grip Compression  
83% Polyester, 17% Spandex

**SIZES:** Adult S-3XL / Youth S-XL

**MSRP:** **CAD \$24.00 / \$22.20**

**USD \$25.81 / \$23.87**



WHITE  
WH



NAVY  
NA



BLACK  
BL

**COMPRESSION PACKAGE SS**

8910A/Y - SHORT SLEEVE COMPRESSION SHIRT  
8912A/Y - COMPRESSION SHORTS

**MSRP:** **CAD \$44.00 / \$42.00**

**USD \$47.31 / \$45.16**

**ENERGY** 

**8912A/Y**

**COMPRESSION SHORTS**

- "KOBE" Branded  
Elasticized Waistband

**FABRIC:** Dri-Grip Compression  
83% Polyester, 17% Spandex

**SIZES:** Adult S-3XL / Youth S-XL

**MSRP:** **CAD \$34.50 / \$32.70**

**USD \$37.10 / \$35.16**



WHITE  
WH



NAVY  
NA



BLACK  
BL

PERFORMANCE

**CLASSIC** 

**8907A/Y**

**SHORT SLEEVE  
MOCK NECK SHIRT**

- Comfort Fit Mock Neck

**FABRIC:** 100% Polyester Micro  
Quick Dry Mesh

**SIZES:** Adult S-3XL / Youth S-XL

**MSRP:** **CAD \$30.90 / \$28.80**  
**USD \$33.23 / \$30.97**



MOISTURE  
WICKING



CUSTOM  
AVAILABLE



DOMESTIC



METALLIC  
MET



BLACK  
BL

FRENCH BLUE  
FIB

NAVY  
NA

SAGE  
SAG

WHITE  
WH

STONE  
STO

RED  
RE

**CLASSIC LS** 

**8911A/Y**

**LONG SLEEVE  
MOCK NECK SHIRT**

- Comfort Fit Mock Neck

**FABRIC:** 100% Polyester Micro  
Quick Dry Mesh

**SIZES:** Adult S-3XL / Youth S-XL

**MSRP:** **CAD \$34.60 / \$32.80**  
**USD \$37.20 / \$35.27**



MOISTURE  
WICKING



CUSTOM  
AVAILABLE



DOMESTIC



FRENCH BLUE  
FIB



SAGE  
SAG

BLACK  
BL

METALLIC  
MET

WHITE  
WH

NAVY  
NA

STONE  
STO

RED  
RE





ROYAL  
RO

# ATTACK

8901A/Y

## DAZZLE UNLINED SHORTS

- Three Needle 1.5" Waistband with Hidden Tunnel Drawstrings
- Two Needle stitched Seams

FABRIC: 100% Polyester Heavy Dazzle

SIZES: Adult S-3XL / Youth S-XL

MSRP: **CAD \$24.40 / \$23.30**

**USD \$26.24 / \$25.05**



NAVY  
NA

MAROON  
MA

WHITE  
WH

RED  
RE

BLACK  
BL

PURPLE  
PU

POWDER BLUE  
POW

ORANGE  
OR

GOLD  
GO



NAVY  
NA

# ENFORCER

8701A/Y

## MICRO MESH SHORTS

- Elasticized Waistband with Drawstring

FABRIC: 100% Polyester Micro Mesh

SIZES: Adult S-3XL / Youth S-XL

MSRP: **CAD \$33.50 / \$31.60**

**USD \$36.02 / \$33.98**

Double-layer micro mesh



BLACK  
BL

ROYAL  
RO



20 STYLES  
IN-STOCK



CONTRAST  
PIPING

WATER  
RESISTANT

NEW  
ATHLETIC  
FIT

WARM UPS

PRIMEAMETO  
PRIMETIME



**NEW  
STYLE**

**VELOCITY\***

**MADE IN  
CANADA**

**WARM  
UPS**

**K3GXJA/JY  
K3GXPA/PY**

**SOFT-SHELL WARM-UP JACKET  
SOFT-SHELL WARM-UP PANT**

- Two Exterior Zippered Pockets
- Open Hem Body with Draw-Cord and Lock

**SOFTSHELL FABRIC:** 100% Polyester Interlock bonded with 100% Polyester Fleece

**SIZES:** Adult S-3XL / Youth XS-XL

**JACKET MSRP:**

**CAD \$120.00 / \$118.00  
USD \$129.00 / \$127.00**

**PANT MSRP:**

**CAD \$58.00 / \$56.00  
USD \$62.40 / \$60.20**

**\*MADE TO ORDER  
12 PCS MINIMUM ORDER  
3 WEEK TURN AROUND**



**BLACK/RED  
BLR**



**BLACK/RED  
BLR**



**BLACK/ORANGE  
BLO**

**BLACK/WHITE  
BL/WH**

**BLACK/GOLD  
BGO**



**BLACK/NAVY  
BLN**

**BLACK/KELLY  
BLK**

**BLACK/ROYAL  
BL/RO**

*\*Navy body available in all colours*

*Need more colours?  
Customize your Velocity Warm-Up suit with made-to-order colours:*



# MEDALIST

**MENS 8860A/Y**  
**LADIES 8865JL**

**MICRO TWILL**  
**WARM-UP JACKET**

- Two Exterior Zippered Pockets
- Velcro Cuffs
- Open Hem Body with Draw-Cord and Lock

**OUTER SHELL:** 100% Micro-Twill Polyester

**LINING:** Micro Mesh Lining with Taffeta Sleeves

**MEN'S SIZES:** S-3XL / Youth S-XL

**MSRP:** **CAD \$70.70 / \$66.70**  
**USD \$76.02 / \$71.72**

**LADIES SIZES:** S-2XL

**MSRP:** **CAD \$70.70**  
**USD \$76.02**



**MENS**  
**NAVY/RED**  
**BAR**



**LADIES**  
**ROYAL/BLACK**  
**ROB**





NAVY/GOLD/WHITE  
NGW

# CONTENDER

8800JA/JY

TRI-COLOUR  
WARM-UP JACKET

- Two Exterior Zippered Pockets
- Velcro Cuffs
- Open Hem Body with Draw-Cord and Lock

OUTER SHELL: 100% Micro-Twill Polyester

LINING: Micro Mesh Lining with Taffeta Sleeves

SIZES: Adult S-3XL / Youth S-XL

MSRP: CAD \$67.10 / \$63.80  
USD \$72.15 / \$68.60



RED/BLACK/  
WHITE RBW



FOREST/BLACK/  
WHITE FBW



PURPLE/BLACK/  
WHITE PBW



NAVY/RED/  
WHITE NRW



BURGUNDY/BLACK/  
WHITE BUBW



BLACK/RED/  
WHITE BRW



BLACK/ORANGE/  
WHITE BOW



BLACK/GOLD/  
WHITE BGW



ROYAL/BLACK/  
WHITE ROBW



NAVY/WHITE  
NA/WH

# CHALLENGER

8820JA/JY

TWO-TONE  
WARM-UP JACKET

- Two Exterior Zippered Pockets
- Velcro Cuffs
- Open Hem Body with Draw-Cord and Lock
- Contrast Stitching

OUTER SHELL: 100% Micro-Twill Polyester

LINING: Micro Mesh Lining with Taffeta Sleeves

SIZES: Adult S-3XL / Youth S-XL

MSRP: **CAD \$65.60 / \$62.70**

**USD \$70.54 / \$67.42**



FOREST/BLACK  
FB



PURPLE/BLACK  
PB



BLACK/ORANGE  
BO



BLACK/RED  
BR



NAVY/RED  
NR



BURGUNDY/BLACK  
BB



WHITE/BLACK  
WB



ROYAL/BLACK  
RB



NAVY/GOLD  
NB



BLACK/WHITE  
BL/WH



BLACK/GOLD  
BL



BLACK  
BL



NAVY  
NA

# PULSE

MENS 8840PA/PY  
LADIES 8845PL

WARM-UP PANTS

- Two Side Seam Zippered Pockets
- One Back Zippered Pocket
- Elasticized Waist with Drawstring
- Covered Lower Leg Zippered Opening
- Open Hem Cuffs

OUTER SHELL: 100% Micro-Twill Polyester

LINING: Micro Mesh Lining with Taffeta Below the Knee

MEN'S SIZES: S-3XL / Youth XS-XL

MSRP: **CAD \$50.80 / \$48.40**

**USD \$54.62 / \$52.04**

LADIES SIZES: XS-2XL

MSRP: **CAD \$50.80**

**USD \$54.62**



# RETRO JACKET

8755JA/JY

**MICRO TWILL  
WARM-UP JACKET**

- Two Exterior Zippered Pockets
- Contrast Stitching
- Open Hem Body with Draw-Cord and Lock

**OUTER SHELL:** 100% Micro-Twill Polyester

**LINING:** Micro Mesh Lining with Taffeta Sleeves

**SIZES:** Adult S-3XL / Youth S-XL

**MSRP:** CAD \$65.70 / \$60.90  
USD \$70.65 / \$65.48



BREATHABLE WIND RESISTANT WATER RESISTANT DECORATION APPLICABLE IMPORT



ROYAL  
RO



BLACK  
BL

NAVY  
NA

RED  
RE

## RETRO PACKAGE

8755JA/JY - MICRO TWILL WARM-UP JACKET  
8755PA/PY - MICRO TWILL WARM-UP PANTS

**MSRP:** CAD \$90.00 / \$88.00  
USD \$96.77 / \$94.62

# RETRO PANT

8755PA/PY

**MICRO TWILL  
WARM-UP PANTS**

- Two Side Seam Zippered Pockets
- One Back Zippered Pocket
- Lower Leg Zippered Opening

**OUTER SHELL:** 100% Micro-Twill Polyester

**LINING:** Micro Mesh Lining with Taffeta Below the Knee

**SIZES:** Adult S-3XL / Youth S-XL

**MSRP:** CAD \$53.50 / \$51.10  
USD \$57.53 / \$54.95



BREATHABLE WIND RESISTANT WATER RESISTANT DECORATION APPLICABLE IMPORT



NAVY  
NA



BLACK  
BL



ROYAL  
RO

# LEGACY JACKET

## 8055JA/JY

**MICROFIBRE  
WARM-UP JACKET**

- Two Exterior Zippered Pockets
- Open Hem Body with Draw-Cord and Lock

**OUTER SHELL:** 100% Microfibre Polyester

**LINING:** Micro Mesh Lining with Taffeta Sleeves

**SIZES:** Adult S-3XL / Youth S-XL

**MSRP:** **CAD \$63.12 / \$60.10**  
**USD \$67.87 / \$64.62**



RED/BLACK  
REB



# CHAMPION

## 8057A/Y

**MICROFIBRE  
WARM-UP SHORTS**

- Elasticized Waist with Drawstring
- Two Side Seam Pockets and Interior Front Pocket
- Hemmed Bottom
- Inseam: Adult 7", Youth 6"

**OUTER SHELL:** 100% Microfibre Polyester

**LINING:** Micro Mesh Lining

**SIZES:** Adult S-3XL / Youth S-XL

**MSRP:** **CAD \$30.20 / \$28.40**  
**USD \$32.47 / \$30.50**



NAVY  
NA



BLACK  
BL





NAVY  
NA



BLACK  
BL

## LEGACY PANT

8056PA/PY

MICROFIBRE  
WARM-UP PANTS

- Elasticized Waist with Drawstring
- Two Side Seam Zippered Wallet Pockets
- One Back Zippered Pocket
- Lower Leg Zipper Openings with Interior Rain Gussets and Velcro
- Open Hem Cuffs with Alteration Allowance

OUTER SHELL: 100% Microfibre Polyester

LINING: Micro Mesh Lining with Taffeta Below the Knee

SIZES: Adult S-3XL / Youth S-XL

MSRP: **CAD \$48.20 / \$45.60**  
**USD \$51.83 / \$49.03**



NAVY  
NA



BLACK  
BL

## LEGACY ZIP-AWAY

8058PA/PY

MICROFIBRE FULL ZIP-AWAY  
WARM-UP PANTS

- Elasticized Waist with Drawstring
- Two Side Seam Zippered Wallet Pockets
- One Back Zippered Pocket
- Full Length Seam Zippers
- Open Hem Cuffs

OUTER SHELL: 100% Microfibre Polyester

LINING: Micro Mesh Lining with Taffeta Below the Knee

SIZES: Adult S-3XL / Youth S-XL

MSRP: **CAD \$55.70 / \$53.70**  
**USD \$59.89 / \$57.74**



# ICON JACKET

8059JA/JY

DIAGONAL TWILL  
WARM-UP JACKET

- Two Exterior Zippered Pockets
- Elastic Cuffs
- Open Hem Body with Draw-Cord and Lock

OUTER SHELL: 100% Diagonal Twill Polyester

LINING: Micro Mesh Lining with Taffeta Sleeves

SIZES: Adult S-3XL / Youth S-XL

MSRP: CAD \$67.40 / \$65.70  
USD \$72.47 / \$70.65



BLACK/GOLD  
1G0



BLACK/RED  
1L1

BLACK/ZINC  
1L2

NAVY/GOLD  
1G0



ZINC/BLACK  
2B

ROYAL/BLACK  
10B

NAVY/ZINC  
1A2

NAVY/RED  
1A1

# ICON PACKAGE

8059JA/JY - DIAGONAL TWILL WARM-UP JACKET  
8059JA/JY - DIAGONAL TWILL WARM-UP PANTS

MSRP: CAD \$94.00 / \$92.00  
USD \$101.08 / \$98.92

# ICON PANT

8060PA/PY

DIAGONAL TWILL  
WARM-UP PANTS

- Elasticized Waist with Drawstring
- Two Side Seam Zippered Wallet Pockets & One Back Zippered Pocket
- Lower Leg Zipper Openings with Interior Rain Gussets & Velcro Closure
- Open Hem Cuffs with Alteration Allowance

OUTER SHELL: 100% Diagonal Twill Polyester

LINING: Micro Mesh Lining with Taffeta Below the Knee

SIZES: Adult S-3XL / Youth S-XL

MSRP: CAD \$55.50 / \$53.70  
USD \$59.68 / \$57.74



NAVY  
1A



BLACK  
1L



# CUSTOMIZE YOUR JACKET

PERSONALIZE YOUR JACKET WITH OUR BEST-IN-CLASS SUBLIMATION PROCESS

SEE p.104



WARM UPS

KOBE Athlete | SAMANTHA KRYSTANTOS, Karate Ontario



NAVY  
NA



BLACK  
BL

## ICON TEARAWAY

8062PA/PY

DIAGONAL TWILL TEARAWAY WARM-UP PANTS

- Hidden tearaway dome snaps
- Elasticized Waist with Drawstring
- Two Side Seam Zippered Wallet Pockets
- One Back Zippered Pocket
- Full Length Seam Zippers
- Open Hem Cuffs with Alteration Allowance

OUTER SHELL: 100% Diagonal Twill Polyester

LINING: Micro Mesh Lining with Taffeta Below the Knee

SIZES: Adult S-3XL / Youth S-XL

MSRP: CAD \$59.90 / \$58.60

USD \$64.41 / \$63.02



WIND RESISTANT



WATER RESISTANT



IMPORT



BLACK/TITANIUM  
BTI



NAVY/TITANIUM  
NTI

## IMPRESSION JACKET

8757JA/JY

DOUBLE KNIT  
WARM-UP JACKET

- Titanium Colour Accent Piping
- Flexible Ribbed Collar and Cuffs
- Zippered Side Pockets
- Flexible Ribbed Bottom Hem

FABRIC: 100% Double Knit Polyester

SIZES: Adult S-3XL / Youth S-XL

MSRP: **CAD \$55.00 / \$53.00**

**USD \$59.14 / \$56.99**



## IMPRESSION PACKAGE

8757JA/JY - DOUBLE KNIT WARM-UP JACKET

8757PA/PY - DOUBLE KNIT WARM-UP PANTS

MSRP: **CAD \$72.00 / \$70.00**

**USD \$77.42 / \$75.27**

## IMPRESSION PANT

8757PA/PY

DOUBLE KNIT  
WARM-UP PANTS

- Elasticized Waist with Drawstring
- Titanium Colour Accent Piping
- Covered Lower Leg Zippered Opening

FABRIC: 100% Double Knit Polyester

SIZES: Adult S-3XL / Youth S-XL

MSRP: **CAD \$40.00 / \$39.00**

**USD \$43.01 / \$41.94**



BLACK  
BL



NAVY  
NA



# SPIRIT JACKET

8054JA/JY

HIGH COUNT POLYESTER  
WARM-UP JACKET

- Two Exterior Zippered Pockets
- Open Hem Body with Draw-Cord and Lock

OUTER SHELL: 100% High Count Polyester

LINING: Micro Mesh Lining with Taffeta Sleeves

SIZES: Adult S-3XL / Youth S-XL

MSRP: **CAD \$55.40 / \$52.00**  
**USD \$59.57 / \$55.91**



# SPIRIT PANT

8054PA/PY

HIGH COUNT POLYESTER  
WARM-UP PANTS

- Elasticized Waist with Drawstring
- Two Side Seam Zippered Wallet Pockets
- One Back Zippered Pocket
- Lower Leg Zipper Openings
- Open Hem Cuffs

OUTER SHELL: 100% High Count Polyester

LINING: Micro Mesh Lining with Taffeta Below the Knee

SIZES: Adult S-3XL / Youth S-XL

MSRP: **CAD \$39.90 / \$37.40**  
**USD \$42.90 / \$40.22**



12 STYLES  
IN-STOCK

ELITE p87

OUTERWEAR

PROTECTION  
FRONTLINE  
ELEMENTS



**ELITE****8068JA/JY****INSULATED SOFT-SHELL JACKET**

- Waterproof Front Accessory Pocket
- Exterior Zippered Side Pockets
- Center-front YKK™ Zipper
- Interior Utility Pocket
- Open Hem Body with Draw-Cord & Lock
- Adjustable Velcro Cuffs

**OUTER SHELL:**

94% Polyester, 6% Spandex, Bonded with 100% Polyester Micro Fleece & Waterproof Membrane

**LINING:** Quilted Taffeta with 100% Polyester Insulation

**SIZES:** Adult S-3XL / Youth S-XL

**MSRP:** **CAD \$123.90 / \$114.10**  
**USD \$133.23 / \$122.69**

BLACK  
BLNAVY  
NA**EXECUTIVE****8040JA/JY****FULL MELTON TEAM JACKET**

- Metal Zippers and Pullers
- Two Exterior Zippered Pockets
- Interior Pocket
- Cell Phone Pocket
- Open Hem Cuffs and Bottom

**FABRIC:** 50% Wool,  
50% Synthetic Melton

**LINING:** Quilted Taffeta with 100% Polyester Insulation

**SIZES:** Adult S-3XL / Youth S-XL

**MSRP:** **CAD \$110.00 / \$105.00**  
**USD \$118.28 / \$112.90**

BLACK  
BL

# EXPEDITION

## 8027/Y

### 3:1 3/4 LENGTH SHELL

- Hidden Roll-Away Storm Hood in Collar
- Three Exterior Zippered Pockets
- Elasticized Cuffs with Adjustable Velcro Tab
- Compatible Interior Zippers for Use with Fleece Liner Jacket 8071/8072 [P. 95]
- Exterior Snap Wind Flap
- Interior Sleeve Tabs for Fleece Liner
- Open Hem Body with Draw-cord & Lock

**OUTER SHELL:** Flat Taslan

**LINING:** Taffeta

**SIZES:** Adult S-3XL / Youth S-XL

**MSRP:** CAD \$84.50 / \$79.10  
USD \$90.86 / \$85.05



WIND  
RESISTANT



WATER  
RESISTANT



EMBROIDERY  
ACCESS



DECORATION  
APPLICABLE



ROYAL/BLACK  
808



BLACK  
BL



NAVY  
NA



RED/BLACK  
808

# HURRICANE

## 8026/Y

### 3:1 BOMBER SHELL

- Interior Sleeve Tabs for Fleece Liner
- Two Zippered Pockets
- Elasticized Cuffs with Adjustable Velcro Tab
- Compatible Interior Zippers for Use with Fleece Liner Jacket 8071/8072 [P. 95]
- Exterior Snap Wind Flap
- Elasticized Waistband

**OUTER SHELL:** Flat Taslan

**LINING:** Taffeta

**SIZES:** Adult S-3XL / Youth S-XL

**MSRP:** CAD \$75.30 / \$70.70  
USD \$80.97 / \$76.02



WIND  
RESISTANT



WATER  
RESISTANT



EMBROIDERY  
ACCESS



DECORATION  
APPLICABLE



IMPORT



ROYAL/BLACK  
808



BLACK  
BL



NAVY  
NA



RED/BLACK  
808



p88 EXPEDITION

RETRO JACKET p79

RETRO PANT p79

# MUSKOKA

## 8028A/Y

### INSULATED JACKET

- Insulated Detachable Hood
- Two Exterior Zippered Pockets
- Exterior Snap Wind Flap
- Open Hem with Drawcord and Lock

**OUTER SHELL:** 100% Nylon Dobby

**LINING:** Upper Micro Fleece with Lower Taffeta

**SIZES:** Adult S-3XL / Youth S-XL

**MSRP:** CAD \$108.40 / \$100.00

USD \$116.56 / \$107.53



BREATHABLE

WIND RESISTANT

WATER RESISTANT

EMBROIDERY ACCESS

IMPORT



BLACK  
BL



NAVY/RED  
NAR



NAVY  
NA



RED/BLACK  
REB

# DIRECTOR

## 8050A/Y

### MICROFIBRE PULLOVER

- Ribbed Collar
- Elasticized Cuffs
- Waist level Opening with Drawcord and Lock

**OUTER SHELL:** 100% Polyester Sueded Microfibre

**LINING:** Moisture Transport Tricoat Liner

**SIZES:** Adult S-3XL / Youth S-XL

**MSRP:** CAD \$50.10 / \$46.50

USD \$53.87 / \$50.00



WIND RESISTANT

WATER RESISTANT

MOISTURE WICKING

IMPORT

CUSTOM KNIIT KNIIT



RED  
RE



METALLIC  
MET



NAVY  
NA



BLACK  
BL



# CAPTAIN

8161JA/JY

## OXFORD NYLON SPORT JACKET

- Two Zippered Pockets
- Adjustable Open Hemmed Cuffs with Gusset
- Open Hem Body with Drawcord and Lock

**OUTER SHELL:** 100% Oxford Nylon

**LINING:** Micro Fleece Lining with Taffeta Sleeves

**SIZES:** Adult S-3XL / Youth S-XL

**MSRP:** CAD \$67.30 / \$63.70

USD \$72.37 / \$68.49



STEEL BLUE/NAVY  
30N



WIND  
RESISTANT

WATER  
RESISTANT

EMBROIDERY  
ACCESS

DECORATION  
APPLICABLE

IMPORT



NAVY  
NA



BLACK  
BL



RED/BLACK  
REB

# EXTREME

8163VA/VY

## OXFORD NYLON SPORT VEST

- Two Zippered Pockets
- Open Hem Body

**OUTER SHELL:** 100% Oxford Nylon

**LINING:** Microfleece Lining

**SIZES:** Adult S-3XL / Youth S-XL

**MSRP:** CAD \$46.90 / \$43.00

USD \$50.43 / \$46.24



STEEL BLUE/NAVY  
30N



WIND  
RESISTANT

WATER  
RESISTANT

EMBROIDERY  
ACCESS

DECORATION  
APPLICABLE

IMPORT



BLACK  
BL



NAVY  
NA

# SIDELINER

8905A/Y

## STADIUM JACKET

- Two Exterior Zippered Pockets
- Self Fabric Elastic Cuffs & Waistband
- Lined Hood with Hidden Tunnel Drawcord

OUTER SHELL: 100% Nylon Taffeta

LINING: 100% Poly Fleece

SIZES: Adult S-3XL / Youth S-XL

MSRP: **CAD \$68.70 / \$63.60**

**USD \$73.87 / \$68.39**



ROYAL  
RO



BLACK  
BL



BURGUNDY  
BU

NAVY  
NA

FOREST  
FO

# STORM

8015J/Y

## SQUALL JACKET

- Rear Ventilation with Snap Closure
- Hidden Rollaway Storm Hood in Collar
- Two Exterior Zippered Pockets
- Open Hem Body with Drawcord & Lock

OUTER SHELL: 100% Nylon Taffeta

LINING: Half Mesh Lining Across Shoulders

SIZES: Adult S-3XL / Youth S-XL

MSRP: **CAD \$52.10 / \$49.20**

**USD \$56.02 / \$52.90**



BLACK  
BL



NAVY  
NA



# LINEBACKER JACKET

## 8011J/JY

### SQUALL JACKET

- Rear Ventilation with Snap Closure
- Hidden Rollaway Storm Hood in Collar
- Two Exterior Zippered Pockets
- Open Hem Body with Drawcord & Lock

**OUTER SHELL:** 100% Nylon Taffeta

**LINING:** Half Mesh Lining Across Shoulders

**SIZES:** Adult S-3XL / Youth S-XL

**MSRP:** CAD \$42.20 / \$39.20

USD \$45.38 / \$42.15



WIND  
RESISTANT



WATER  
RESISTANT



CUSTOM  
AVAILABLE



IMPORT



NAVY  
NA



BLACK  
BL

# LINEBACKER PANT

## 8011P/PY

### SQUALL PANTS

- Elasticized Waist with Drawstring
- Elasticized Cuffs
- Two Exterior Zippered Pockets
- Lower Leg Zipper Openings with Rain Gussets

**FABRIC:** 100% Nylon Taffeta

**SIZES:** Adult S-3XL / Youth S-XL

**MSRP:** CAD \$33.70 / \$31.60

USD \$36.24 / \$33.98



WIND  
RESISTANT



WATER  
RESISTANT



CUSTOM  
AVAILABLE



IMPORT



NAVY  
NA



BLACK  
BL

6 STYLES  
IN-STOCK

PINNACLE<sup>p95</sup>

FLEECE

WANT TO  
GO TO THE  
CORE



# PINNACLE



## 8071A/72Y

### FULL ZIP HIGHLAND FLEECE JACKET

- Open Side Seam Pockets
- Open Hem Body with Dual Drawcord Lock
- Sleeve Tabs for Insertion as Liner to 8026/8027 [p.88]

FABRIC: 16oz. Non-pilling Thermal Fleece

SIZES: Adult S-3XL / Youth S-XL

MSRP: **CAD \$61.10 / \$58.90**

**USD \$65.70 / \$63.33**



DECORATION APPLICABLE



CUSTOM AVAILABLE



DOMESTIC



FOREST  
FO



BLACK  
BL



ROYAL  
RO



RED  
RE



NAVY  
NA

# PRESSURE



## 8075A/76Y

### 1/4 ZIP HIGHLAND FLEECE JACKET

- Open Side Seam Pockets
- Open Hem Body with Dual Drawcord Lock

FABRIC: 16oz. Non-pilling Thermal Fleece

SIZES: Adult S-3XL / Youth S-XL

MSRP: **CAD \$56.00 / \$53.80**

**USD \$60.22 / \$57.85**



DECORATION APPLICABLE



CUSTOM AVAILABLE



DOMESTIC



FOREST  
FO



BLACK  
BL



NAVY  
NA



RED  
RE



ROYAL  
RO

# DEFENSE

8080A/Y

## TWO-TONE LINED FLEECE JACKET

- Open Side Seam Pockets
- Open Hem Body with Drawcord & Lock

**OUTER SHELL:** 16oz. Non-pilling Thermal Fleece

**LINING:** Nylon Taffeta

**SIZES:** Adult S-3XL / Youth S-XL

**MSRP:** CAD \$53.60 / \$49.60  
 USD \$57.63 / \$53.33



NAVY/RED  
NA/R



BLACK  
BL



NAVY  
NA



SAGE/BLACK  
SBK

# FORCE MADE IN CANADA

8073A/74Y

## FULL ZIP HIGHLAND FLEECE VEST

- Open Side Seam Pockets
- Open Hem Body with Dual Drawcord Lock

**FABRIC:** 16oz. Non-pilling Thermal Fleece

**SIZES:** Adult S-3XL / Youth S-XL

**MSRP:** CAD \$48.00 / \$46.00  
 USD \$51.61 / \$49.46



RED  
RE



ROYAL  
RO



FOREST  
FO



NAVY  
NA



BLACK  
BL





# PULSAR

## 8090

### FLEECE BLANKET

- Self Fabric Carry Case with YKK™ Zipper & Nylon Web Carry Strap
- Old English Style Stitch Work in Contrasting Colours

FABRIC: 16oz. Non-pilling Thermal Fleece

SIZES: 50"L x 60"W

MSRP: **CAD \$45.50**

**USD \$48.92**



#### MADE TO ORDER COLOURS



ROYAL  
RO



FOREST  
FO



RED  
RE



# SQUADRON

## 8099S

### FLEECE SCARF

FABRIC: 16oz. Non-pilling Thermal Fleece

SIZES: 11"L x 58"H

MSRP: **CAD \$9.70**

**USD \$10.43**



TOP TO BOTTOM: RED [RE], NAVY [NA], BLACK [BL], CHARCOAL [CHA], ROYAL [RO], FOREST [FO]

**12** STYLES  
IN-STOCK

BREAKAWAY p99

# BAGS





# BREAKAWAY

## BP1200

### TEAM BACK PACK

- Durable Construction
- Interior Padded Laptop Pocket
- Earphone Pass Through
- External Side Mesh Pockets
- Comfort Straps

FABRIC: 1200 Denier Polyester PVC-Coated

SIZES: 17" X 11.25"

MSRP: **CAD \$49.50**  
**USD \$52.10**



PADDED LAPTOP POCKET



ORGANIZER

# TRAPPER



## TLB12

### TEAM LAUNDRY BAG/BALL BAG

- Drawstring with Cord Lock
- Durable 150 Denier Yarn Construction
- Small Pinpoint Air Holes for Ventilation
- White Imprintable Front 6" x 6" Panel
- Capacity: 4-6 Balls

FABRIC: 100% Polyester Lightweight Mesh

SIZES: 24" X 36"

MSRP: **CAD \$18.90**  
**USD \$20.32**



NAVY  
NA



RED  
RE



BLACK  
BL



WHITE  
WH

# EQUIPMENT BAG

## LB2010

- Wet/Dry Compartment
- Padded Shoulder Strap
- Exterior Stick Holder Straps
- Metal Grommets for Ventilation

FABRIC: 600 Denier Polyester, PVC-Coated

SIZES: 44.5"L X 13"W X 14"H

MSRP: **CAD \$63.60**  
**USD \$68.39**



BLACK  
BL



NAVY  
NA

# VENTILATED TEAM GARMENT BAG

## GB2006

- Two Velcro Closure Compartments
- Mesh Side for Ventilation
- Two Carrying Handles with Wrap Around Velcro Closures
- Nylon Hanger Straps
- Side Zipper Access

FABRIC: 600 Denier Polyester, PVC-Coated

SIZES: 40"L X 24"W X 8"H

MSRP: **CAD \$28.70**  
**USD \$30.86**



DECORATION APPLICABLE IMPORT



BLACK  
BL



FOREST  
FO



ROYAL  
RO



NAVY  
NA



RED  
RE

# TEAM GARMENT BAG

## GB60040

- Two Velcro Closure Compartments
- Ventilation Grommet
- Two Carrying Handles with Wrap Around Velcro Closures
- Interior Hanger Cord with Cord Lock
- Full Length Zipper Opening

FABRIC: 600 Denier Polyester, PVC-Coated

SIZES: 40"L X 24"W X 8"H

MSRP: **CAD \$26.40**  
**USD \$28.39**



DECORATION APPLICABLE IMPORT



FOREST  
FO



BLACK  
BL



ROYAL  
RO



NAVY  
NA



RED  
RE



## INDIVIDUAL GARMENT BAG

### GB2001

- Nylon Web Carrying Strap
- Front Zipper Access

FABRIC: 600 Denier Polyester, PVC-Coated

SIZES: 36.5"L X 24"W

MSRP: **CAD \$14.20**  
**USD \$15.27**

BLACK  
BL



FOREST  
FO



ROYAL  
RO



NAVY  
NA



RED  
RE



## DELUXE SPORT BAG

### SB2003

- Wrap Around Carrying Handles with Reinforced Stitching
- Adjustable/Detachable Shoulder Strap with Swivel Buckles
- Exterior Bottom Feet Protectors
- U-Shape Top Zipper Opening
- Two Front & One End Zipper Compartment
- Black Elasticized Ball/Helmet Holder

FABRIC: 420 Denier Nylon, PVC-Coated

SIZES: 25"L X 13"W X 13.5"H

MSRP: **CAD \$44.70**  
**USD \$48.06**

FOREST  
FO



BLACK  
BL



ROYAL  
RO



NAVY  
NA



# ALL-PURPOSE BAGS

## STANDARD FEATURES:

- Wrap Around Carrying Handles with Reinforced Stitching
- Exterior Bottom Feet Protectors
- Adjustable/Detachable Shoulder Strap with Swivel Buckles

FABRIC: 600 Denier Polyester PVC-coated



## 27" - SB60027

### UNIQUE FEATURES:

- Detachable Front Imprint Compartment
- Two Exterior End Zippered Compartments

SIZE: 27"L x 10.5"W x 12"H

MSRP: **CAD \$36.20**  
**USD \$38.92**

NAVY  
NA



## 22" - SB60022

### UNIQUE FEATURES:

- One Exterior End Zippered Compartment

SIZE: 22"L x 9.5"W x 11"H

MSRP: **CAD \$30.60**  
**USD \$32.90**

RED  
RE



## 20" - SB60020

### UNIQUE FEATURES:

- Detachable Front Imprint Compartment
- U-shaped Top Zippered Opening

SIZE: 20"L x 9"W x 11"H

MSRP: **CAD \$25.20**  
**USD \$27.10**

ROYAL  
RO





## ALL-PURPOSE BAG

### 24" - CW24

- Wrap Around Carrying Handles with Reinforced Stitching
- Exterior Bottom Feet Protectors
- Adjustable/Detachable Shoulder Strap with Swivel Buckles
- Detachable Front Imprint Compartments
- U-Shape Top Zipper Opening
- Interior Waterproof Compartment

**FABRIC:** 600 Denier Polyester, PVC-Coated

**SIZES:** 24"L X 9"W X 12"H

**MSRP:** **CAD \$34.70**

**USD \$37.31**



ROYAL  
RY

BLACK  
BL

FOREST  
FG

## TOTE BAG

### SB19

- Wrap Around Carrying Handles with Reinforced Stitching
- Exterior End Pocket
- Adjustable/Detachable Shoulder Strap with Swivel Buckles
- Centre-Top Zipper Opening

**FABRIC:** 70 Denier Nylon, PVC-Coated

**SIZES:** 19"L X 8.5" X 9"H

**MSRP:** **CAD \$15.60**

**USD \$16.77**



BLACK  
BL



NAVY  
NA

RED  
RE

ROYAL  
RY

# CUSTOM

## CONVENIENT

*Projects are done in-house from start to finish, providing you with faster turnaround times and competitive prices.*

## BEST DESIGN

*Our designers will help you create the best design that will truly represent you – if you can imagine it, we can create it.*

## QUALITY

*Proudly manufactured in Canada to ensure top-quality products for our customers.*

## DEPENDABLE

*Our top-notch customer service will guide you to ensure you have a great experience.*





# DECORATION SERVICES

## SUBLIMATION



*Produces dynamic designs on your garment. With no colour limitations, your designs will stand out. See the KOBÉ SUB360 program for template sublimation products that offer faster production and turnaround. (p.6)*

## TWILL APPLIQUÉ



*Great for name/sponsor bars and numbers. Combined with embroidery or screen printing, it provides a solid backing for your graphics, minimizing warp and distortion.*

## THERMO FILM



*Fast and easy. Great for name/sponsor bars and numbers.*

## SCREEN PRINT



*Offers you a smooth and even look to your decoration.*

## EMBROIDERY



*Excellent for logos, name/sponsor bars, numbers and stop signs. Always looks great and gives you a more traditional look.*

## CUT & SEW / SUBLIMATION

*Not every team or athlete is made the same, so why should their uniforms be? The possibilities are endless when you work with Kobe Sportswear. Choose from a wide range of colours, fabrics, collar styles, patterns and additional features to create items manufactured exclusively for your team or event.*

### KOBÉ SUBLIMATION ADVANTAGE

*With our sublimation transfer process, you can print high quality digital images on a huge variety of items not possible with traditional screen printing or thermo transfers. The vibrant colours and details offered by this technology are unparalleled, making it the most effective way in communicating your message and brand.*



Jersey fabric being prepared for cutting



Sublimated Fabric



AVAILABLE SUBLIMATED PRODUCTS



**WARM-UP JACKET**

- Elasticized cuffs
- Open hem body with draw-cord & lock

OUTER SHELL: 100% Polyester

LINING: 100% Polyester Taffeta

SIZES: Adult S-3XL / Youth S-XL

MSRP\*: \$141.40

\*Prices may Vary + Artwork Charges



**NXT HOODIE**

- Drawcord with metal tips (Adult size only)

FABRIC: 100% NXT moisture management poly fleece

SIZES: Adult S-3XL / Youth S-XL

MSRP\*:

	<i>pullover</i>	<i>full zip</i>
Front only	\$76.00	\$80.00
Front & back	\$100.00	\$104.00
Fully Sublimated	\$140.00	\$152.00

\*Prices may Vary + Artwork Charges



**TEE SHIRT**

- Comfort crew neck with moisture wicking capability

FABRIC: 100% Polyester micro quick dry mesh

SIZES: Adult S-3XL / Youth S-XL

MSRP\*:

Front only	\$42.80
Front & back	\$57.20
Fully Sublimated	\$74.30

\*Prices may Vary + Artwork Charges





## AVAILABLE SUBLIMATED PRODUCTS

### ROWING

#### JERSEY

- Fitted Crew Neck Styling

**FABRIC:** Dri-Grip compression, 83% Polyester, 17% Spandex

**SIZES:** Adult S-3XL / Youth S-XL

**MSRP:** **\$66.00 (Sleeveless)**  
**\$90.00 (Long Sleeves)**

\*Short sleeve available, call for pricing

\*Prices may Vary + Artwork Charges



DECORATION  
APPLICABLE



CUSTOM  
AVAILABLE



DOMESTIC

### SCARF

#### SUBLIMATED WINTER SCARF

**FABRIC:** 16oz. non-pilling thermal fleece

**SIZE:** 60" x 8"

**MSRP:** **\$28.00**

#### SUBLIMATED SUMMER SCARF

**FABRIC:** KST quick drying mesh

**MSRP:** (1 side) **\$25.00**

(2 sides) **\$40.00**

**SIZE:** 50" x 8"

\*Prices may Vary + Artwork Charges



DECORATION  
APPLICABLE



CUSTOM  
AVAILABLE



DOMESTIC

### TOQUE

#### POWER / FLEECE

**FABRIC:** - Dri-grip compression  
- 83% polyester 17% Spandex  
(Power)  
- 16oz. non-pilling thermal  
fleece (Fleece)

**MSRP:** Power **\$18.00**

Fleece **\$27.00**

\*Prices may Vary + Artwork Charges



DECORATION  
APPLICABLE



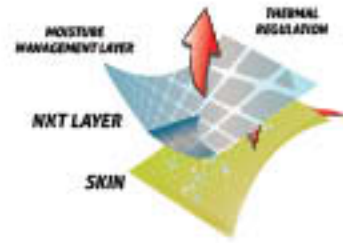
CUSTOM  
AVAILABLE



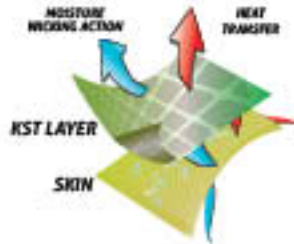
DOMESTIC



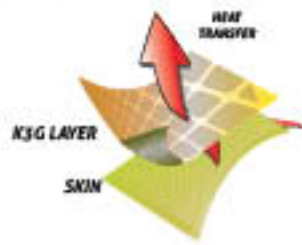
# BRANDED FABRIC DESCRIPTIONS



NXT is the next level in performance fleece technology from Kobe Sportswear. Constructed from a lightweight, fast drying outer layer with a soft brushed inner layer engineered to minimize heat dissipation. NXT technology keeps you warm without weighing you down.



Kobe SoftTech is a lightweight performance mesh that feels soft and natural to the touch. Its moisture wicking capability and breathable construction accelerates dry time and provides optimal temperature regulation.



K3G technology enhances the mobility, ventilation, and durability of the jersey on the ice or on the diamond. Designed with high performance athletes in mind, K3G is perfect for those who demand the best.

## DECORATION

Popular Mascot Images \* Many more images are available. Ask your sales representative for more information.



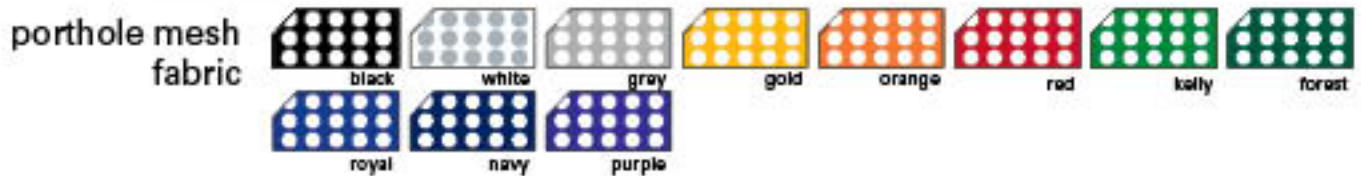
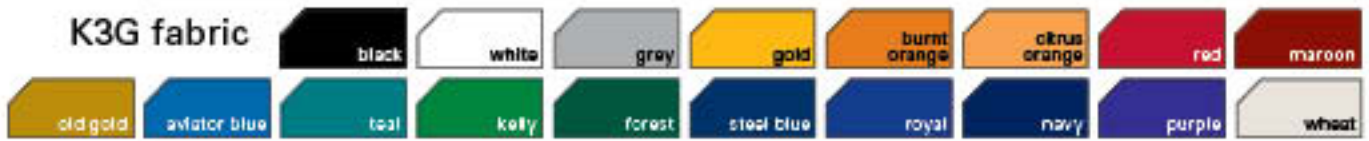
Popular Fonts \* Many more fonts are available. Ask your sales representative for more information.

<b>BLOCK</b>	<b>OLD ENGLISH</b>	<b>GOUDY</b>	<b>FRANKIN</b>	<b>SCRIPT</b>
<b>RAVEL</b>	<b>NEW GLOBAL</b>	<b>HEINEKEN</b>	<b>FALCONS</b>	<b>TITAN</b>
<b>LATHA</b>	<b>EUROSTILE</b>	<b>ACADEMY</b>	<b>VLADIMIR</b>	<b>MAGNETO</b>



# COLOUR SWATCHES

## HOCKEY COLOUR OPTIONS



## KST QUICK DRY MESH



## NXT MOISTURE MANAGEMENT FLEECE



SIZING	AREA	XS	S	M	L	XL	2XL	3XL
ADULT	CHEST	-	37-39"	40-42"	43-45"	46-49"	50-53"	54-57"
	WAIST	-	30-32"	32-34"	34-36"	36-38"	38-40"	40-42"
	INSEAM (PANTS)	-	30.5"	31"	31.5"	32"	32.5"	33"
	INSEAM (SHORTS)#8057	-	7"	7"	7"	7"	7"	7"
	INSEAM (SHORTS) #8701, #8901	-	7"	7.5"	8"	8.5"	9"	9.5"
LADIES	BUST	30-32"	33-35"	36-38"	39-41"	42-44"	45-46"	-
	INSEAM	29.5"	30"	30.5"	31"	31.5"	32"	-
YOUTH*	CHEST	-	26-27"	28-30"	31-33"	34-36"	-	-
	WAIST	-	22-24"	24-26"	26-28"	28-30"	-	-
	INSEAM (PANTS)	-	23"	26"	28"	30"	-	-
	INSEAM (SHORTS)#8057	-	6"	6"	6"	6"	-	-
	INSEAM (SHORTS) #8701, #8901	-	5"	5.5"	6"	6.5"	-	-

\* YOUTH SIZING EQUIVALENTS: S (6/8), M (10/12), L (14/16), XL (18)

HOCKEY JERSEY SIZING*	S	M	L	XL	2XL	3XL	GOALIE
YOUTH	38" *	40"	42" *	44"	-	-	-
ADULT	48"	50"	52"	54"	56"	58"	60"
KNIT HOCKEY SOCKS	20"	24"	28"	32"	-	-	-
K3G HOCKEY SOCKS	22"	26"	30"	-	-	-	-

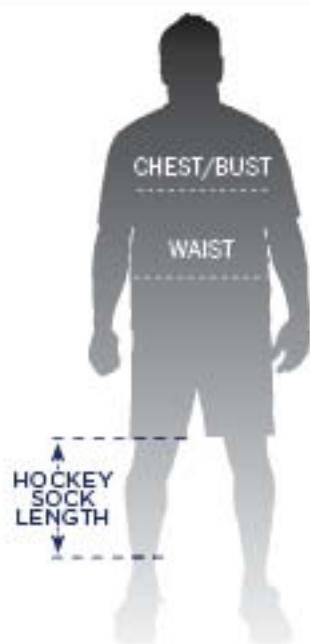
\* ACTUAL JERSEY SIZING \* MADE TO ORDER \* YOUTH SMALL IN STOCK FOR 6200 SERIES. MADE TO ORDER FOR ALL OTHER SERIES.

BASEBALL JERSEY SIZING*	S	M	L	XL	2XL	3XL	GOALIE
YOUTH	26-27"	28-30"	31-33"	34-36"	-	-	-
ADULT	37-39"	40-42"	43-45"	46-49"	50-53"	54-57"	-

\* RECOMMENDED SIZING

LACROSSE JERSEY SIZING	S	M	L	XL	2XL	3XL	GOALIE
YOUTH	-	40"	-	44"	-	-	-
ADULT	44"	46"	48"	50"	52"	54"	54"

> 31.00 SIZING ONLY VISIT [KOBESPORTSWEAR.COM](http://KOBESPORTSWEAR.COM) FOR ALL OTHER LACROSSE JERSEY SIZINGS



DESCRIPTIVE ICON LEGEND

RESISTS MOISTURE BUILD-UP	TRANSPORTS MOISTURE AWAY FROM SKIN	OFFERS COMPLETE PROTECTION FROM WATER PENETRATION	RESISTS WATER PENETRATION
ALLOWS AIRFLOW FOR OPTIMUM TEMPERATURE REGULATION	ENGINEERED WITH WIND BLOCKING PROPERTIES	EASY ZIPPER ACCESS FOR EMBROIDERY	CUSTOM COLOUR AND FABRIC COMBINATIONS AVAILABLE
FORM-FITTED AND STRETCHES TO ALLOW MAXIMUM MOBILITY	LIGHT REFLECTING DECORATIVE PIPING	PRODUCT CAN BE DECORATED	PRODUCT MADE IN CANADA
PRODUCT MANUFACTURED OVERSEAS			



STYLE	PAGE	CATEGORY	STYLE	PAGE	CATEGORY
3100 SERIES, Lacrosse	60	LACROSSE	9500 SERIES	37	HOCKEY
5300 SERIES	37	HOCKEY	9800 SERIES	37	HOCKEY
5400 SERIES	37	HOCKEY	BB14, Slider	46	BASEBALL
5450 SERIES	37	HOCKEY	BP1200, Breakaway	99	BAGS
6100 PRO SERIES	32	HOCKEY	CW24	103	BAGS
6200 TEAM SERIES	36	HOCKEY	CUSTOM HOCKEY	40	HOCKEY
8011J/JY, Linebacker Jacket	93	OUTERWEAR	CUSTOM BASEBALL	52	BASEBALL
8011P/PY, Linebacker Pant	93	OUTERWEAR	CUSTOM BASKETBALL	56	BASKETBALL
8015J/Y, Storm	92	OUTERWEAR	CUSTOM LACROSSE	60	LACROSSE
8026/Y, Hurricane	88	OUTERWEAR	CUSTOM WARM-UP JACKET	106	CUSTOM
8027/Y, Expedition	88	OUTERWEAR	DL60040	45	HOCKEY
8028A/Y, Muskoka	90	OUTERWEAR	FIELDLAX	59	LACROSSE
8040JA/JY, Executive	87	OUTERWEAR	GB2001	101	BAGS
8050A/Y, Director	90	OUTERWEAR	GB2006	100	BAGS
8054JA/JY, Spirit Jacket	85	WARM-UPS	GB60040	100	BAGS
8054PA/PY, Spirit Pant	85	WARM-UPS	HB60036/42	45	HOCKEY
8055JA/JY, Legacy Jacket	80	WARM-UPS	HPS2010A/Y,CA/CY, Rampage	38	HOCKEY
8056PA/PY, Legacy Pant	81	WARM-UPS	K36 AMATEUR JERSEY	24	HOCKEY
8057A/Y, Champion	80	WARM-UPS	K36 AMATEUR SOCK	24	HOCKEY
8058PA/PY, Legacy Zip-Away	81	WARM-UPS	K36 PRO SERIES	26	HOCKEY
8059JA/JY, Icon Jacket	82	WARM-UPS	K36 SUBLIMATION SERIES	42	HOCKEY
8060PA/PY, Icon Pant	82	WARM-UPS	K36BB1, Triple Crown	51	BASEBALL
8062PA/PY, Icon Tearaway	83	WARM-UPS	K36BB2, Ace	51	BASEBALL
8068JA/JY, Elite	87	OUTERWEAR	K36BB3, Closer	50	BASEBALL
8071A/72Y, Pinnacle	95	FLEECE	K36BB4, Punchout	48	BASEBALL
8073A/74Y, Force	96	FLEECE	K36BBP, Dash	50	BASEBALL
8075A/76Y, Pressure	95	FLEECE	K36XJA/JY, Velocity Jacket	75	WARM-UPS
8080A/Y, Defense	96	FLEECE	K36XPA/PY, Velocity Pant	75	PERFORMANCE
8090, Pulsar	97	FLEECE	KOBEHAT	67	PERFORMANCE
8099S, Squadron	97	FLEECE	LB2010	99	BAGS
8161JA/JY, Captain	91	OUTERWEAR	NXT HOODIE	106	CUSTOM
8163VA/VY, Extreme	91	OUTERWEAR	OMHA Jersey Program	39	HOCKEY
8701A/Y, Enforcer	73	PERFORMANCE	PRACTICE JERSEYS	37	HOCKEY
8755JA/JY, Retro Jacket	79	WARM-UPS	PROSTYLE	32	HOCKEY
8755PA/PY, Retro Pant	79	WARM-UPS	REF JERSEY	38	HOCKEY
8757JA/JY, Impression Jacket	84	WARM-UPS	RTB1230/1236/1240	44	HOCKEY
8757PA/PY, Impression Pant	84	WARM-UPS	ROWING JERSEY	107	CUSTOM
8800JA/JY, Contender	77	WARM-UPS	SB19	103	BAGS
8820JA/JY, Challenger	78	WARM-UPS	SB2003	101	BAGS
8840PA/PY, Pulse	78	WARM-UPS	SB60020/22/27	102	BAGS
8845PL, Ladies Pulse	78	WARM-UPS	SCARF	107	CUSTOM
8860JA/JY, Men's Medalist	76	WARM-UPS	STB10	45	HOCKEY
8865JL, Ladies Medalist	76	WARM-UPS	TEAMSTYLE	36	HOCKEY
8901A/Y, Attack	73	PERFORMANCE	TEE SHIRT	106	CUSTOM
8905A/Y, Sideline	92	OUTERWEAR	TLB12, Trapper	99	BAGS
8907A/Y, Classic	72	PERFORMANCE	TOQUE	107	CUSTOM
8909A/Y, Grip LS	70	PERFORMANCE	WTB1236/1240	44	HOCKEY
8910A/Y, Grip	71	PERFORMANCE	SUB360	6	
8911A/Y, Classic LS	72	PERFORMANCE	SUB360 HOCKEY	8	SUB360
8912A/Y, Energy	71	PERFORMANCE	SUB360 BASEBALL	10	SUB360
8913A/Y, Endurance	70	PERFORMANCE	SUB360 BASKETBALL	12	SUB360
8914A/Y, Men's Aggression	64	PERFORMANCE	SUB360 LACROSSE	14	SUB360
8914L, Ladies Aggression	64	PERFORMANCE	SUB360 RUGBY	16	SUB360
8915A/Y, Men's Aggression LS	65	PERFORMANCE	SUB360 SOCCER	18	SUB360
8916A/Y, Swingman	66	PERFORMANCE	SUB360 SCARVES & TOQUES	20	SUB360
8917A/Y, Fastbreak	66	PERFORMANCE			
8950A/Y, Carrier	69	PERFORMANCE	BRANDED FABRIC DESCRIPTIONS	108	
8950HL, Dangler	67	PERFORMANCE	COLOUR SWATCHES	109	
8955A/Y, Show-Stopper	68	PERFORMANCE	DECORATION SERVICES	105	CUSTOM
8960A/Y, Clutch	69	PERFORMANCE	STANDARD KOBE COLOURS	21	
9100 PRO SERIES	32	HOCKEY	SIZE CHART	110	



**POWERING**  **ATHLETES** **WORLDWIDE**



**K**  **BE**®

*[KOBESPORTSWEAR.COM](http://KOBESPORTSWEAR.COM)*

**K3G**